

**ITEM 3****Paper No. WRWA 20-25****WESTERN RIVERSIDE WASTE AUTHORITY**

<b>MEETING</b>	11 <sup>th</sup> November 2020												
<b>REPORT AUTHOR/DATE</b>	General Manager <i>(Contact Mark Broxup - Tel. 020 8871 2788)</i> 3 <sup>rd</sup> November 2020												
<b>SUBJECT</b>	A Report outlining progress with operations and other matters since the previous meeting of the Authority.												
<b>CONTENTS</b>	<table><tr><td>Page 1</td><td>Executive Summary</td></tr><tr><td>Pages 1 to 12</td><td>Items reported on</td></tr><tr><td>Page 12</td><td>Recommendations</td></tr><tr><td>Pages 13- 22</td><td>Appendix A – Performance Monitoring</td></tr><tr><td>Page 23</td><td>Appendix B – Education Programme leaflet</td></tr><tr><td>Pages 24 - 26</td><td>Appendix C – Draft WRWA response to Government consultation on Ecodesign and Energy Labelling Regulations for 2021</td></tr></table>	Page 1	Executive Summary	Pages 1 to 12	Items reported on	Page 12	Recommendations	Pages 13- 22	Appendix A – Performance Monitoring	Page 23	Appendix B – Education Programme leaflet	Pages 24 - 26	Appendix C – Draft WRWA response to Government consultation on Ecodesign and Energy Labelling Regulations for 2021
Page 1	Executive Summary												
Pages 1 to 12	Items reported on												
Page 12	Recommendations												
Pages 13- 22	Appendix A – Performance Monitoring												
Page 23	Appendix B – Education Programme leaflet												
Pages 24 - 26	Appendix C – Draft WRWA response to Government consultation on Ecodesign and Energy Labelling Regulations for 2021												
<b>STATUS</b>	Open												
<b>BACKGROUND PAPERS</b>	None												

**This page is left blank intentionally**

## **EXECUTIVE SUMMARY**

1. This paper brings Members up to date on operational and other matters, which, in themselves, do not warrant the production of a separate paper. The majority of these matters are for Members' information, but where approval is sought this is referred to in the report and summarised at the end. The specific matters covered in this report are:-
  - a) Operations
  - b) Booking System Update
  - c) Performance Monitoring
  - d) Education Programme
  - e) WRWA Communications
  - f) Environment Bill
  - g) Consultation on draft Ecodesign and Energy Labelling Regulations for 2021
  - h) Take Charge +
  - i) Brexit Transition
  - j) Riverside Energy Park
  - k) Constituent Council New Recycling Initiatives
  - l) Clerk to the Authority
  - m) items costing between £5,000 and £30,00

## **OPERATIONS**

2. There has been no major disruption in service to the main Transfer Stations' operations since the last Authority meeting.

## **BOOKING SYSTEMS UPDATE**

3. At the last Authority meeting it was agreed to introduce a booking system trial at the HWRC for a six-month period, from 1<sup>st</sup> February 2021. A procurement process has commenced seeking proposals to provide a booking system for an initial trial period of six months. The deadline for submissions is 12<sup>th</sup> November 2020.
4. Assuming the procurement process is successful and officers are confident a compliant system can be delivered in the timescale, then it is planned to commence a communications plan in late December 2020 / early January 2021 to inform residents about the introduction of the booking system. The following will be used to convey the message:

- Leaflets will be handed out at the HWRC
- Electronic signage at the HWRC
- Social Media – Nextdoor and Twitter
- Paid for advertising on Facebook
- The Authority's website and Borough websites
- Full page adverts will be placed in local publications.

## **PERFORMANCE MONITORING**

### **Introduction**

5. Detailed tonnage tables are attached as Appendix A to this report. The tables shown set out:
  - a) the tonnages of each waste type (including co-mingled recycling contamination) delivered by each constituent council in the current financial year to date, together with projected outturn tonnages, compared against those budgeted for and the previous financial year's outturn;
  - b) the projected annual cost for each commodity, compared to what these would be if the Authority's budgeted tonnage of each commodity was received;
  - c) forecast tonnages for future years, adjusted simply by the number of working days in each year; the major waste type and co-mingled contamination tonnages are also shown on a monthly as well as an annual basis; and
  - d) comparisons of the tonnage of each major waste type handled by each constituent council on an annual basis.

### **Points to Highlight**

6. Whilst General Waste (the residual waste that cannot be reused or recycled and is sent for energy recovery) accounts for around 76% of the delivered waste stream, it accounts for almost 93% of the Authority's waste disposal costs after allowing for the treatment of the contamination within the co-mingled recycling. By comparison co-mingled recycling represents 19% of the delivered tonnage, but only accounts for 4% of the Authority's costs.
7. From tonnage data to date we are predicting a 2.18% reduction in total waste handled by the Authority in 2020/21 from that budgeted for and a 2.96% decrease in General Waste. All the predictions are based on the actual tonnage

up until 30<sup>th</sup> September 2020 and are distorted due to the impact on Covid-19 on the tonnages during the first quarter of 2020/21.

8. The predictions for General Waste vary significantly across the constituent councils; decreases are predicted for Hammersmith & Fulham at 0.97% and Kensington and Chelsea at 22.8%. Lambeth has a predicted increase of 2.04% and Wandsworth of 9.58%. The loss of commercial waste in Kensington and Chelsea has impacted significantly and the effect of the lockdown, with more residents being at home, has caused a significant increase in household waste in Wandsworth. Hammersmith & Fulham and Lambeth tonnages appear to have balanced out due to the reductions in the amount of commercial waste collected, but with increases in household waste due to more residents being at home.
9. The predicted tonnages of co-mingled recycling also vary significantly across the four boroughs, with increases for Hammersmith & Fulham at 5.7%, Lambeth at 13.81% and Wandsworth at 14.74%. Kensington and Chelsea, however, is currently forecast to have a decrease of 23.85%.
10. The forecast for the Household Waste and Recycling Centre is distorted because of the closure of the facility in April and May 2020 due to the lockdown and currently predicts a reduction in total waste of 12.68% and a reduction in General Waste of 9.58%.

### **EDUCATION PROGRAMME**

11. Since the last Authority meeting the Education Programme has carried out a number of socially distanced outdoor workshops, but as Autumn advanced these were no longer considered viable due to the unreliability of the weather. The Education Team are now offering online workshops to schools via several online platforms and the online flier attached as Appendix B for Members' information details the workshops offered for the different curriculum based key stages.
12. Schools are being contacted individually to encourage them to use these resources. The response has been fair and it is hoped that the take up will improve as the schools settle into their new ways of working due to Covid 19 requirements.
13. Adult online tours of the MRF and transfer station are also being offered and are being promoted on the Authority's website and via the Borough websites.

14. The table below details the workshops that, at the time of writing, have either been carried out online or are booked in to happen during the Autumn term.

Borough	Name of school/ed. establishment	Date	Total No. of workshops	Assembly
			<b>23</b>	<b>3</b>
Wandsworth	All Saints	07/10/2020	4	
Wandsworth	All Saints	08/10/2020	5	
Wandsworth	Allfarthing	15/10/2020	2	
Wandsworth	Allfarthing	04/11/2020	2	
Wandsworth	Allfarthing	12/11/2020	2	
Lambeth	Telferscot	09/11/2020	4	
Lambeth	Telferscot	10/11/2020	4	
Wandsworth	Smallwood	25/11/2020		3
			<b>Total No. of adults (tours)</b>	
			<b>111</b>	
Camden	UCL	14/10/2020	7	
Westminster	Imperial College	20/10/2020	85	
H&F	KLC School of Design	21/10/2020	12	
Wandsworth	Roehampton Institute	17/11/2020	7	

15. The table below details the number of Adults online tours that have been carried out or are planned to take place over the coming weeks. More details of the tours can be found on the WRWA website - <https://wrwa.gov.uk/schools-adult-groups/online/>

Borough	Resident Tour/Event	Date	Total No. of residents approx.
			75
K&C and H&F	Residents Tour	03/11/2020	15
Wandsworth	Resident Tour	16/11/2020	15
Wandsworth	Resident Tour	20/11/2020	15
K&C and H&F	Residents Tour	13/11/2020	15
Lambeth	Resident Tour	tbc	15
Lambeth	Resident Tour	tbc	15
Wandsworth	Climate change Summit (panel)	18/11/2020	tbc

## **WRWA COMMUNICATIONS**

### **Communications plan – Financial year 2020/2021**

16. At the Authority meeting on 23<sup>rd</sup> January 2020 (Paper WRWA 20-05) it was agreed that, from 1<sup>st</sup> April 2020, the Authority should run its own communications campaigns on areas directly affecting the Authority's business and continue to manage two existing campaigns; namely, 'What Happens to your Recycling' and the 'End of the Line for Waste' reduction campaign online, via social media and at the Household Waste and Recycling Centre (HWRC).
17. With the onset of Covid-19 and the introduction of the lockdown resulting in the closure and reopening of the HWRC the Authority's priorities changed and it focussed on communicating the reopening of the HWRC and the social distancing requirements.
18. Other activities that the Authority's website and social media platforms have supported are Recycle Week (20-27 September 2020) and London Repair Week (12-17 October 2020) and we will also be supporting the 'Take Charge +' battery fire awareness campaign that starts week commencing 26<sup>th</sup> October 2020 (see paragraphs 33 to 37 below).
19. With effect from Monday, 2<sup>nd</sup> November 2020, the Authority will carry on again with the two core campaigns promoting 'What Happens to your Recycling' and the 'End of the Line for Waste' reduction campaign. However it was planned that face to face engagements would be carried out on the HWRC, employing personnel to talk to residents to encourage them to reduce waste and to reuse and maximise recycling, but due to social distancing that has not been possible and is unlikely for the foreseeable future.
20. The Booking System trial communications plan will also be resourced from this financial year's budget and will commence in late December 2020, or early January 2021, to provide a long lead in time for the start of the trial in February 2021, at an estimated cost of £5,000.

### **Communications plan – Financial year 2021/2022**

21. It is proposed to continue with the two core campaigns in Financial Year 2021/22 using social media and to focus attention on increasing Reuse and Recycling at the HWRC as detailed overleaf.

22. It is also proposed to keep in place a £25,000 budget for any campaigns that may be appropriate to the Government's plans to introduce new waste management legislation covering matters such as compulsory food and garden waste collections, a deposit return scheme and extended producer responsibility for packaging. This budget, if required, will be funded from the Recycling Reserve which currently has a balance of £250,000.

Work Stream	Annual Budget	New Waste Management Requirements Budget, if required	Total
Social Media advertising – using paid-for targeted posts (by location) on Facebook, Instagram and Twitter	£5,000		
A design budget for all electronic adverts, posts and communications material at the HWRC	£10,000		
Communications relating to increasing Reuse and Recycling at the HWRC.	£5,000		
A budget for any new Waste Management requirements, if required for innovation, special projects or new engagement methods.		£25,000	
Total	£20,000	£25,000	£45,000

23. Members are requested to approve the proposed communications budget for Financial year 2021/21, which provides a reduction of £5,000 when compared to Financial year 2020/21 budget due to social distancing requirements not permitting face to face engagement at the HWRC.

### **ENVIRONMENT BILL 2019-2021**

24. The Environment Bill 2019-2021 was being considered by a Public Bill Committee but, due to current circumstances, the sittings of the Committee have been suspended until further notice. The Committee is now scheduled to report by Tuesday, 1<sup>st</sup> December 2020.

25. As instructed by the Authority (Paper No WRWA 20-14), on 26<sup>th</sup> August 2020 officers submitted to the Public Bill Committee evidence in respect of the Environment Bill 2019-20, highlighting that the Bill does not address what the terms 'recycling' and 'recyclable' mean and associated issues with Section 48(2) of the Environmental Protection Act 1990. Further information on the progress of the Bill is available [here](#).



## **CONSULTATION ON DRAFT ECODESIGN AND ENERGY LABELLING REGULATIONS FOR 2021**

26. The Government is consulting on the draft Ecodesign for Energy-Related Products and Energy Information Regulations 2021 that was published on 30<sup>th</sup> September 2020 and the closing date is 11<sup>th</sup> November 2020, at 11.45pm. The Regulations are to be made under the two separate powers:

- Ecodesign powers which will exist in the Ecodesign for Energy-Related Products Regulations 2010, as amended by the Ecodesign for Energy-Related Products and Energy Information (Amendment) (EU Exit) Regulations 2019 at the end of the Transition Period; and
- Energy Labelling powers which will exist in the retained Energy Labelling Framework Regulation (EU) 2017/1369, as amended by the Ecodesign for Energy-Related Products and Energy Information (Amendment) (EU Exit) Regulations 2019 at the end of the Transition Period. These Regulations require the Secretary of State to consult on new product-specific regulations and the associated Impact Assessment. This is what this consultation document does.

27. The draft regulations published as part of this consultation relate to seven products. These are:

- Electric motors and variable speed drives (“electric motors”);
- Electrical mains-operated welding equipment (“welding equipment”);
- Household washing machines/washer-dryers;
- Household dishwashers;
- Refrigerating appliances (“household refrigeration”);
- Refrigerating appliances with a direct sales function (“commercial refrigeration”); and
- Electronic displays.

28. The draft regulations are intended to:

- a) update existing ecodesign requirements for electric motors, household washing machines/washer-dryers, household dishwashers, electronic displays, and household refrigeration;
- b) introduce new ecodesign requirements for welding equipment and commercial refrigeration; and
- c) introduce new energy labelling requirements for commercial refrigeration.

29. Some of the requirements take effect before the end of the Brexit Transition Period and will be saved in UK law from 1<sup>st</sup> January 2021, whereas those due to come into force in 2021 require the Government to introduce specific legislation to ensure that Great Britain realises the associated benefits.
30. The proposed draft regulations reflect what the UK voted for as a Member State and the Government's support was affirmed by carrying out cost-benefit analysis and engagement with UK interested parties.
31. Through the draft regulations proposed in this consultation, the Government's expects 15.8 TWh of electricity savings by 2050 in the domestic sector, which is the equivalent of up to a £3 billion reduction on household energy bills. This will also result in around 1.3 MtCO<sub>2</sub> of Carbon Savings for the same period.

#### **Authority response to the consultation**

32. The Authority is asked to endorse the response to the consultation (see Appendix C to this report), which Officers will have submitted with a note explaining that it is subject to approval. The response, which deals with the areas in the consultation relevant to the Authority's remit, supports the draft regulations, particularly those that relate to the Ecodesign of household appliances that aims to ensure electrical products last longer as they can be more easily repairable and are specifically designed to be to recyclable thus reducing waste.

#### **TAKE CHARGE +**

33. It is estimated that lithium-ion or other high-energy rechargeable batteries that have been improperly disposed of by consumers cause over a quarter of all fires at waste management facilities.
34. All batteries should either be recycled separately to other waste, or embedded in Waste Electrical and Electronic Equipment (WEEE). When they are not recycled separately by the consumer they are likely to be subject to compaction or shredding and exposed to heat and water, which can lead to short-circuiting and create a source of ignition which, in the presence of other waste as fuel, leads to large fires, damage to property and an endangerment to lives.
35. To help combat this, the Environment Services Association (ESA) launched its 'TAKE CHARGE +' campaign, on 26<sup>th</sup> October 2020, in which it is urging consumers

to 'Take Charge and Recycle Batteries Responsibly' by depositing all their batteries in the correct recycling stream.

36. The ESA anticipates that to achieve meaningful, long-term, results a sustained multiphase campaign will be required. The purpose of this first phase is simply to:

- a) raise awareness of the issue – primarily among older children, teenagers and younger adults;
- b) raise awareness of the different types of batteries contained in various product types;
- c) provide consumers with access to clear and factual information to empower them to make the right choices; and
- d) provide stakeholders, particularly local authorities, with quality information to share with their audiences.

37. The Authority is supporting the campaign by using the free resources supplied by the ESA in its online communications and advertising.

### **BREXIT TRANSITION**

38. When the UK left the EU on 31<sup>st</sup> January 2020, it entered a transition period (sometimes described as the “implementation period”). This period allows the UK to continue its current relationship with the EU while the future trading relationship and security co-operation is negotiated.

39. The transition period is due to expire on 31<sup>st</sup> December 2020, when the UK's relationship with the EU will be determined by the new agreements it has entered into on trade and other areas of co-operation. If no deal is reached, the UK would have to rely on previous international conventions for security co-operation and would trade with the EU on World Trade Organization terms.

40. Therefore there is a risk that, in early in 2021, recycling markets, the value of recyclables and the ability to transport goods generally, including recyclable materials, across the channel could be disrupted to a lesser or greater degree depending upon the agreements that are, or are not, negotiated during the remainder of 2020.

41. In particular, there is a fear that HGV vehicles without the correct documentation will be stopped from boarding ferries, or on arrival at an EU port, and this will cause knock-on delays for all HGV vehicles. If there are delays, it is also possible that priority will be given to perishable food goods, medicines and Covid-19 related equipment and therefore exporting recyclables may become difficult, at least in the short term.
42. Cory Riverside Energy currently export some glass, paper, cardboard and aluminium cans to EU countries and, in preparation for no new trade agreements being in place, Cory is putting a number of contingency options in place including plans for additional storage capacity, contingency outlets and options for alternative haulage arrangements. In addition to this they are working closely with all of their European outlets to ensure that they have the required paperwork in place for 1<sup>st</sup> January 2021.

#### **RIVERSIDE ENERGY PARK (REP)**

43. On 9<sup>th</sup> April 2020 the Secretary of State for Business, Energy and Industrial Strategy, Alok Sharma, granted a Development Consent Order (**DCO**) to Cory Riverside Energy (**CRE**) for a Riverside Energy Park (**REP**), to be located alongside the existing Energy from Waste plant operated by Riverside Resource Recovery Ltd. (a CRE group company) in the London Borough of Bexley.
44. The Mayor of London, Sadiq Khan, initiated plans to contest the Secretary of State's decision and, on 21<sup>st</sup> May 2020, he submitted an application to the High Court for a Judicial Review which was granted on 7<sup>th</sup> June 2020. However, on 1<sup>st</sup> October 2020, the Mayor decided to withdraw his application and the DCO has therefore come into force.

#### **CONSTITUENT COUNCIL RECYCLING INITIATIVES**

45. At the meeting of the Authority on 22<sup>nd</sup> September 2010 (Paper No. WRWA 669A) Members instructed the Clerk to write to each of the constituent councils to inform them that, in future, should they wish to make arrangements themselves to recycle any significant tonnage of waste then, in accordance with Section 48 of the Environment Protection Act 1990, they must, as soon as reasonably practicable, notify the Authority in writing. The Authority will then approve or object to any such proposal at its next available meeting. The Clerk wrote to the constituent councils, as instructed, on 27<sup>th</sup> October 2010.

46. On 6<sup>th</sup> October 2020 Hammersmith & Fulham Council notified the Authority of its intention to separately trial a separate food waste collection service for its residents, involving approximately 6,000 kerbside properties, from November 2020. It is estimated that the trial will generate around 250 to 450 tonnes of food waste per year. In line with decisions made by the Authority at its meeting in June 2020 (Paper No. WRWA 20-14) officers confirmed the Authority's approval for the trial.
47. The General Manager wrote to CRE on 13<sup>th</sup> October 2020 seeking their approval and CRE replied by letter on 19<sup>th</sup> October 2020 confirming that, providing the food waste is being separately collected from the General Waste (not extracted from the General Waste stream via third party sorting/processing) and on the basis that current research still shows that Anaerobic Digestion is environmentally superior to composting and other recovery options (including Energy from Waste), Cory Riverside Energy will support the trial, in principle, but would need to be informed if the proposed tonnages for the food waste trial were to change to ensure that they can plan for tonnage fluctuations at the Energy from Waste Facility in Belvedere in the short or longer term.

#### **CLERK TO THE AUTHORITY**

48. At its meeting in September 2020 (Paper No. WRWA 20-23) the Authority agreed to interview Mr. Bayo Dosunmu, Lambeth Council's Strategic Director – Resident Services (Deputy Chief Executive), for the position of Clerk effective from 1<sup>st</sup> April 2021. The appointments committee met on 20<sup>th</sup> October 2020 (Paper No. WRWA 20-24) and, after due deliberation and subject to receipt of satisfactory references, Mr Dosunmu was appointed.
49. Mr. Dosunmu has held his current role at Lambeth Council since February 2019 and prior to that he held senior positions at Homes England, the UK Civil Service and the 2012 Olympic Delivery Authority.

#### **ITEMS COSTING BETWEEN £5,000 AND £30,000**

50. There have been no items of expenditure that have been authorised by officers under delegated powers that fall within the band range of £5,000 to £30,000 since the last Authority meeting.

## **COMMENTS OF THE TREASURER**

51. Constituent councils are reminded to make their own assumptions in relation to tonnage levels and that the information at the beginning of this report will assist them in doing so.
52. If the revised communications budget is approved, this will generate an annual saving of £5,000 which will be incorporated in the annual budget and levy setting paper in January.

## **RECOMMENDATIONS**

53. It is recommended that the Authority approves:
- a) the proposed communications budget for Financial year 2021/21, as detailed in paragraphs 21 to 23 above;
  - b) the WRWA response to the Government's draft Ecodesign and Energy Labelling Regulations for 2021, as detailed in Appendix C to this report; and
  - c) otherwise receives this report as information.

-----  
M. Broxup  
GENERAL MANAGER

Western Riverside Administration Office  
Smugglers Way  
Wandsworth  
SW18 1JS

3<sup>rd</sup> November 2020

Tonnage							Budget 2020/2021 Cost £	Projected 2020/2021 Cost £	Projected 2020/2021 Variance £
	2019/2020 Outturn	2020/2021 Budget	2020/2021 Forecast	Difference to Budget		2020/2021 £/Tonne			
				Tonnes	Percentage				
Batteries	1	1	0	-	-49%	61.00	41	21	-20
Clinical Waste	18	19	15	-	-20.8%	600.00	11,145	8,821	-2,323
Co-Mingled	11,703	11,543	12,380	836	7.2%	28.00	323,213	346,632	23,418
Detritus Waste	449	411	393	-	-4.3%	83.00	34,078	32,625	-1,453
Electricals	20	11	37	26	229.2%	53.50	604	1,988	1,384
Fridges	89	85	88	2	2.8%	52.00	4,445	4,571	125
Gas Bottles	1	0	1	1	180.8%	139.50	48	134	87
General Waste	56,021	55,421	55,480	58	0.1%	154.00	8,534,861	8,543,864	9,003
Carpet	-	-	-	-		154.00	-	-	-
Green Waste	83	4	83	80	2187.0%	103.00	376	8,596	8,220
Inert Waste	5	-	5	5		31.50	-	172	172
Paint & Oil	-	-	-	-		132.50	-	-	-
Paper & Cardboard	-	-	-	-		18.00	-	-	-
Scrap Metals	19	5	69	64	1241.7%	21.97	114	1,525	1,411
Textiles	-	-	-	-		199.50	-	-	-
Tyres	1	-	1	1		297.00	-	213	213
Wood	-	-	-	-		110.50	-	-	-
Grand Total	68,410	67,500	68,553	1,052	1.6%	Sub-Total	8,908,697	8,946,112	37,415
Contamination	1,594	1,555	1,609	54	3.5%	154.00	239,470	247,816	8,346
Grand Total							9,148,167	9,193,929	45,761

Forecast Tonnes			
	2021/2022	2022/2023	2023/2024
Batteries	0	0	0
Clinical Waste	15	15	15
Co-Mingled	12,380	12,380	12,282
Detritus Waste	393	393	390
Electricals	37	37	37
Fridges	88	88	87
Gas Bottles	1	1	1
General Waste	55,480	55,480	55,041
Carpet	-	-	-
Green Waste	83	83	83
Inert Waste	5	5	5
Paint & Oil	-	-	-
Paper & Cardboard	-	-	-
Scrap Metals	69	69	69
Textiles	-	-	-
Tyres	1	1	1
Wood	-	-	-
Grand Total	68,553	68,553	68,011
Contamination	1,609	1,609	1,596

Co-Mingled Contamination					
	2016/2017	2017/2018	2018/2019	2019/2020	2020/2021
Apr	14.2%	11.6%	13.4%	13.8%	9.9%
May	12.1%	15.9%	13.0%	13.5%	11.7%
Jun	14.2%	12.1%	12.5%	14.5%	10.9%
Jul	11.0%	13.3%	15.8%	12.0%	17.2%
Aug	13.0%	17.1%	15.8%	16.4%	12.9%
Sep	12.9%	11.5%	16.6%	13.3%	14.8%
Oct	13.5%	15.1%	19.3%	10.7%	13.0%
Nov	16.0%	13.5%	15.3%	14.4%	13.0%
Dec	18.5%	16.8%	18.7%	12.3%	13.0%
Jan	15.7%	16.1%	16.5%	16.2%	13.0%
Feb	15.2%	13.7%	12.1%	13.4%	13.0%
Mar	11.9%	12.0%	12.9%	13.8%	13.0%
Average	14.0%	14.1%	15.2%	13.6%	13.0%
				Budget	13.5%

Working Days					
	2019/2020	2020/2021	2021/2022	2022/2023	2023/2024
Total	254	253	253	253	251
Diff from Year before		-1	0	0	-2
Change		-0.39%	0.00%	0.00%	-0.79%

General Waste Tonnes				
	2019/2020	2020/2021	Difference	
Apr	4,633	4,462	-	171 -3.68%
May	4,909	4,518	-	391 -7.97%
Jun	4,551	4,947	396	8.71%
Jul	5,064	4,840	-	224 -4.43%
Aug	4,460	4,396	-	64 -1.43%
Sep	4,574	4,810	235	5.15%
Oct	4,951	4,893	-	58 -1.16%
Nov	4,769	4,714	-	55 -1.16%
Dec	4,828	4,772	-	56 -1.16%
Jan	4,632	4,578	-	54 -1.16%
Feb	4,111	4,063	-	48 -1.16%
Mar	4,541	4,488	-	53 -1.16%
Total	56,021	55,480	-	542 -0.97%

Co-Mingled Tonnes				
	2019/2020	2020/2021	Difference	
Apr	913	969	56	6.16%
May	985	961	-	24 -2.44%
Jun	912	1,048	135	14.85%
Jul	1,038	1,122	84	8.09%
Aug	879	925	46	5.28%
Sep	974	1,018	44	4.52%
Oct	1,060	1,119	59	5.58%
Nov	983	1,038	55	5.58%
Dec	1,078	1,138	60	5.58%
Jan	1,030	1,088	57	5.58%
Feb	875	924	49	5.58%
Mar	975	1,029	54	5.58%
Total	11,703	12,380	677	5.79%

Detritus Waste Tonnes				
	2019/2020	2020/2021	Difference	
Apr	29	28	-	2 -5.24%
May	27	26	-	1 -3.29%
Jun	40	29	-	11 -28.10%
Jul	34	32	-	2 -6.62%
Aug	35	33	-	3 -7.28%
Sep	38	32	-	6 -16.68%
Oct	42	37	-	5 -12.52%
Nov	64	56	-	8 -12.52%
Dec	42	36	-	5 -12.52%
Jan	30	27	-	4 -12.52%
Feb	39	34	-	5 -12.52%
Mar	27	24	-	3 -12.52%
Total	449	393	-	55 -12.36%

Co-mingled Contamination Tonnes				
	2019/2020	2020/2021	Difference	
Apr	126	96	-	29 -23.39%
May	133	112	-	21 -15.54%
Jun	132	115	-	18 -13.37%
Jul	124	192	68	54.74%
Aug	144	119	-	24 -16.97%
Sep	130	151	21	16.30%
Oct	113	146	33	28.87%
Nov	142	135	-	7 -4.89%
Dec	132	148	16	12.03%
Jan	167	141	-	26 -15.44%
Feb	117	120	3	2.80%
Mar	135	134	-	1 -0.76%
Total	1,594	1,609	15	0.94%

Green Waste Tonnes				
	2019/2020	2020/2021	Difference	
Apr	-	-	-	0.00%
May	-	-	-	0.00%
Jun	-	-	-	0.00%
Jul	-	-	-	0.00%
Aug	-	0	0	0.00%
Sep	-	-	-	0.00%
Oct	1	1	-	0 -0.39%
Nov	-	-	-	0.00%
Dec	-	-	-	0.00%
Jan	82	82	-	0 -0.39%
Feb	-	-	-	0.00%
Mar	-	-	-	0.00%
Total	83	83	0	0.16%

Wood Waste Tonnes				
	2019/2020	2020/2021	Difference	
Apr	-	-	-	0.00%
May	-	-	-	0.00%
Jun	-	-	-	0.00%
Jul	-	-	-	0.00%
Aug	-	-	-	0.00%
Sep	-	-	-	0.00%
Oct	-	-	-	0.00%
Nov	-	-	-	0.00%
Dec	-	-	-	0.00%
Jan	-	-	-	0.00%
Feb	-	-	-	0.00%
Mar	-	-	-	0.00%
Total	-	-	-	0.00%



Tonnage							Budget	Projected	Projected
	2019/2020	2020/2021	2020/2021	Difference to Budget		2020/2021	2020/2021	2020/2021	2020/2021
	Outturn	Budget	Forecast	Tonnes	Percentage	£/Tonne	Cost £	Cost £	Variance £
Batteries	-	-	-	-	-	61.00	-	-	-
Clinical Waste	1	1	1	0	-31.3%	600.00	876	602	275
Co-Mingled	15,961	15,995	12,154	3,840	-24.0%	28.00	447,856	340,325	107,532
Detritus Waste	1,021	1,222	776	446	-36.5%	83.00	101,387	64,386	37,001
Electricals	26	21	40	20	94.6%	53.50	1,103	2,147	1,044
Fridges	51	54	42	12	-22.6%	52.00	2,815	2,179	636
Gas Bottles	1	1	1	0	50.1%	139.50	111	167	56
General Waste	58,209	57,965	44,929	13,035	-22.5%	154.00	8,926,595	6,919,128	2,007,467
Carpet	-	-	-	-	-	154.00	-	-	-
Green Waste	475	463	508	45	9.8%	103.00	47,638	52,297	4,660
Inert Waste	-	-	2	2	-	31.50	-	75	75
Paint & Oil	-	-	-	-	-	132.50	-	-	-
Paper & Cardboard	-	-	-	-	-	18.00	-	-	-
Scrap Metals	-	-	0	0	-	21.97	-	7	7
Textiles	-	-	-	-	-	199.50	-	-	-
Tyres	-	-	-	-	-	297.00	-	-	-
Wood	1	1	-	1	-100.0%	110.50	66	-	66
Grand Total	75,746	75,721	58,454	17,267	-22.8%	Sub-Total	9,528,448	7,381,298	2,147,150
Contamination	1,699	1,690	1,312	378	-22.4%	154.00	260,260	202,021	58,239
Grand Total							9,788,708	7,583,319	2,205,389

Forecast Tonnes			
	2021/2022	2022/2023	2023/2024
Batteries	-	-	-
Clinical Waste	1	1	1
Co-Mingled	12,154	12,154	12,058
Detritus Waste	776	776	770
Electricals	40	40	40
Fridges	42	42	42
Gas Bottles	1	1	1
General Waste	44,929	44,929	44,574
Carpet	-	-	-
Green Waste	508	508	504
Inert Waste	2	2	2
Paint & Oil	-	-	-
Paper & Cardboard	-	-	-
Scrap Metals	0	0	0
Textiles	-	-	-
Tyres	-	-	-
Wood	-	-	-
Grand Total	58,454	58,454	57,992
Contamination	1,312	1,312	1,301

Co-Mingled Contamination					
	2016/2017	2017/2018	2018/2019	2019/2020	2020/2021
Apr	10.8%	14.7%	12.2%	9.5%	9.2%
May	11.5%	11.8%	10.9%	10.0%	10.7%
Jun	11.1%	13.2%	11.0%	11.3%	10.0%
Jul	11.1%	12.1%	13.2%	9.3%	11.4%
Aug	11.3%	14.3%	11.4%	13.9%	10.8%
Sep	13.1%	11.9%	12.7%	11.1%	12.2%
Oct	11.9%	14.0%	10.1%	10.0%	10.8%
Nov	12.1%	10.6%	11.2%	10.0%	10.8%
Dec	11.4%	12.3%	13.6%	10.7%	10.8%
Jan	11.8%	11.3%	9.9%	12.0%	10.8%
Feb	12.6%	11.7%	13.0%	10.6%	10.8%
Mar	13.6%	9.2%	10.9%	9.9%	10.8%
Average	11.9%	12.2%	11.7%	10.6%	10.8%
				Budget	10.6%

Working Days					
	2019/2020	2020/2021	2021/2022	2022/2023	2023/2024
Total	254	253	253	253	251
Diff from Year before		-1	0	0	-2
Change		-0.39%	0.00%	0.00%	-0.79%

General Waste Tonnes				
	2019/2020	2020/2021	Difference	
Apr	4,741	3,473	1,267	-26.73%
May	4,937	3,491	1,446	-29.28%
Jun	4,813	3,989	823	-17.11%
Jul	5,156	3,921	1,235	-23.96%
Aug	4,899	3,675	1,223	-24.97%
Sep	4,858	4,189	669	-13.77%
Oct	5,153	3,970	1,184	-22.97%
Nov	5,128	3,950	1,178	-22.97%
Dec	5,051	3,891	1,160	-22.97%
Jan	4,722	3,638	1,085	-22.97%
Feb	4,328	3,334	994	-22.97%
Mar	4,424	3,408	1,016	-22.97%
Total	58,209	44,929	13,280	-22.81%

Co-Mingled Tonnes				
	2019/2020	2020/2021	Difference	
Apr	1,266	847	419	-33.13%
May	1,331	953	378	-28.43%
Jun	1,335	1,106	229	-17.15%
Jul	1,467	1,034	433	-29.51%
Aug	1,176	934	242	-20.59%
Sep	1,373	1,191	182	-13.23%
Oct	1,430	1,087	343	-24.00%
Nov	1,385	1,052	332	-24.00%
Dec	1,476	1,121	354	-24.00%
Jan	1,325	1,007	318	-24.00%
Feb	1,189	904	285	-24.00%
Mar	1,208	918	290	-24.00%
Total	15,961	12,154	3,806	-23.85%

Detritus Waste Tonnes				
	2019/2020	2020/2021	Difference	
Apr	76	60	16	-21.19%
May	75	70	4	-5.45%
Jun	84	70	15	-17.44%
Jul	81	56	24	-30.17%
Aug	88	56	31	-35.61%
Sep	85	59	26	-30.60%
Oct	100	76	24	-24.14%
Nov	152	116	37	-24.14%
Dec	75	57	18	-24.14%
Jan	75	57	18	-24.14%
Feb	80	60	19	-24.14%
Mar	52	39	12	-24.14%
Total	1,021	776	245	-24.00%

Co-mingled Contamination Tonnes				
	2019/2020	2020/2021	Difference	
Apr	121	77	43	-35.79%
May	133	102	31	-23.19%
Jun	151	110	41	-26.88%
Jul	136	118	18	-13.37%
Aug	163	101	62	-38.19%
Sep	152	146	6	-4.14%
Oct	143	117	26	-17.89%
Nov	138	114	25	-17.97%
Dec	157	121	36	-23.12%
Jan	159	109	50	-31.64%
Feb	125	98	28	-22.25%
Mar	120	99	21	-17.14%
Total	1,699	1,312	387	-22.78%

Green Waste Tonnes				
	2019/2020	2020/2021	Difference	
Apr	23	25	2	8.38%
May	32	30	2	-6.20%
Jun	36	35	0	-0.73%
Jul	36	41	5	14.43%
Aug	28	27	1	-4.13%
Sep	29	39	10	32.54%
Oct	43	46	3	6.78%
Nov	56	60	4	6.78%
Dec	39	42	3	6.78%
Jan	108	115	7	6.78%
Feb	23	24	2	6.78%
Mar	20	22	1	6.78%
Total	475	508	33	6.94%

Wood Waste Tonnes				
	2019/2020	2020/2021	Difference	
Apr	-	-	-	0.00%
May	-	-	-	0.00%
Jun	-	-	-	0.00%
Jul	-	-	-	0.00%
Aug	1	-	1	-100.00%
Sep	-	-	-	0.00%
Oct	-	-	-	0.00%
Nov	-	-	-	0.00%
Dec	-	-	-	0.00%
Jan	-	-	-	0.00%
Feb	-	-	-	0.00%
Mar	-	-	-	0.00%
Total	1	-	1	-100.00%



Tonnage	2019/2020 Outturn	2020/2021 Budget	2020/2021 Forecast	Difference to Budget		2020/2021 £/Tonne	Budget 2020/2021 Cost £	Projected 2020/2021 Cost £	Projected 2020/2021 Variance £
				Tonnes	Percentage				
Batteries	-	-	-	-	-	61.00	-	-	-
Clinical Waste	3	4	3	1	-13.6%	600.00	2,219	1,917	302
Co-Mingled	19,543	19,078	22,242	3,164	16.6%	28.00	534,176	622,780	88,605
Detritus Waste	518	518	614	97	18.7%	83.00	42,958	50,998	8,040
Electricals	113	94	29	65	-69.2%	53.50	5,040	1,554	3,486
Fridges	174	160	149	11	-7.2%	52.00	8,333	7,736	597
Gas Bottles	4	3	-	3	-100.0%	139.50	440	-	440
General Waste	86,536	86,356	88,302	1,946	2.3%	154.00	13,298,785	13,598,433	299,647
Carpet	-	-	-	-	-	154.00	-	-	-
Green Waste	733	736	845	109	14.8%	103.00	75,785	87,011	11,226
Inert Waste	2	2	-	2	-100.0%	31.50	52	-	52
Paint & Oil	-	-	-	-	-	132.50	-	-	-
Paper & Cardboard	423	387	439	53	13.6%	18.00	6,960	7,906	946
Scrap Metals	114	122	43	79	-64.9%	21.97	2,677	940	1,737
Textiles	-	-	-	-	-	199.50	-	-	-
Tyres	8	7	3	3	-48.4%	297.00	1,995	1,030	965
Wood	140	200	-	200	-100.0%	110.50	22,060	-	22,060
Grand Total	108,311	107,665	112,669	5,005	4.6%	Sub-Total	13,996,128	14,378,425	382,298
Contamination	2,796	2,672	3,212	540	20.2%	154.00	411,488	494,708	83,220
Grand Total							14,407,616	14,873,133	465,518

Forecast Tonnes			
	2021/2022	2022/2023	2023/2024
Batteries	-	-	-
Clinical Waste	3	3	3
Co-Mingled	22,242	22,242	22,066
Detritus Waste	614	614	610
Electricals	29	29	29
Fridges	149	149	148
Gas Bottles	-	-	-
General Waste	88,302	88,302	87,603
Carpet	-	-	-
Green Waste	845	845	838
Inert Waste	-	-	-
Paint & Oil	-	-	-
Paper & Cardboard	439	439	436
Scrap Metals	43	43	42
Textiles	-	-	-
Tyres	3	3	3
Wood	-	-	-
Grand Total	112,669	112,669	111,779
Contamination	3,212	3,212	3,187

Co-Mingled Contamination					
	2016/2017	2017/2018	2018/2019	2019/2020	2020/2021
Apr	12.6%	16.5%	15.7%	11.1%	11.3%
May	13.8%	17.7%	12.2%	16.8%	14.4%
Jun	14.9%	11.5%	16.8%	13.2%	11.3%
Jul	11.9%	22.4%	16.2%	15.6%	14.6%
Aug	11.9%	18.9%	16.7%	13.6%	19.2%
Sep	13.4%	14.9%	19.2%	13.9%	16.9%
Oct	11.9%	13.1%	20.2%	12.7%	14.4%
Nov	15.3%	15.0%	14.9%	14.5%	14.4%
Dec	12.2%	17.8%	18.4%	15.6%	14.4%
Jan	16.3%	16.2%	16.5%	16.2%	14.4%
Feb	13.2%	15.9%	14.5%	16.7%	14.4%
Mar	18.6%	17.6%	15.3%	11.7%	14.4%
Average	13.9%	16.5%	16.4%	14.3%	14.4%
				Budget	14.0%

Working Days					
	2019/2020	2020/2021	2021/2022	2022/2023	2023/2024
Total	254	253	253	253	251
Diff from Year before		-1	0	0	-2
Change		-0.39%	0.00%	0.00%	-0.79%

General Waste Tonnes				
	2019/2020	2020/2021	Difference	
Apr	7,319	7,070	249	-3.40%
May	7,471	7,227	244	-3.27%
Jun	7,037	7,685	648	9.20%
Jul	7,787	7,745	42	-0.54%
Aug	7,089	7,263	174	2.45%
Sep	6,953	7,644	691	9.93%
Oct	7,611	7,750	140	1.84%
Nov	7,205	7,338	132	1.84%
Dec	7,445	7,582	137	1.84%
Jan	7,211	7,343	132	1.84%
Feb	6,381	6,498	117	1.84%
Mar	7,028	7,157	129	1.84%
Total	86,536	88,302	1,765	2.04%

Co-Mingled Tonnes				
	2019/2020	2020/2021	Difference	
Apr	1,579	1,813	235	14.86%
May	1,710	1,814	105	6.12%
Jun	1,497	1,998	502	33.54%
Jul	1,672	1,939	266	15.94%
Aug	1,524	1,632	107	7.04%
Sep	1,540	1,662	122	7.92%
Oct	1,704	1,935	232	13.59%
Nov	1,534	1,743	209	13.59%
Dec	1,751	1,988	238	13.59%
Jan	1,824	2,072	248	13.59%
Feb	1,503	1,707	204	13.59%
Mar	1,706	1,938	232	13.59%
Total	19,543	22,242	2,699	13.81%

Detritus Waste Tonnes				
	2019/2020	2020/2021	Difference	
Apr	32	38	6	18.96%
May	38	44	7	17.66%
Jun	41	41	0	0.49%
Jul	23	39	16	66.44%
Aug	37	45	8	20.59%
Sep	44	48	4	9.60%
Oct	56	66	10	18.31%
Nov	88	104	16	18.31%
Dec	51	60	9	18.31%
Jan	40	47	7	18.31%
Feb	38	45	7	18.31%
Mar	31	37	6	18.31%
Total	518	614	96	18.51%

Co-mingled Contamination Tonnes				
	2019/2020	2020/2021	Difference	
Apr	175	262	87	49.85%
May	287	262	25	-8.61%
Jun	197	289	91	46.34%
Jul	262	280	18	7.06%
Aug	207	236	29	14.01%
Sep	214	240	26	12.13%
Oct	217	280	63	29.08%
Nov	222	252	30	13.38%
Dec	272	287	15	5.50%
Jan	295	299	4	1.52%
Feb	251	247	4	-1.58%
Mar	199	280	81	40.70%
Total	2,796	3,212	416	14.89%

Green Waste Tonnes				
	2019/2020	2020/2021	Difference	
Apr	6	11	5	94.76%
May	15	21	6	43.44%
Jun	28	36	8	27.22%
Jul	34	36	2	6.28%
Aug	31	44	13	41.36%
Sep	51	43	9	-17.00%
Oct	76	88	12	15.18%
Nov	206	237	31	15.18%
Dec	136	157	21	15.18%
Jan	91	104	14	15.18%
Feb	46	53	7	15.18%
Mar	12	14	2	15.18%
Total	733	845	112	15.28%

Wood Waste Tonnes				
	2019/2020	2020/2021	Difference	
Apr	32	-	32	-100.00%
May	27	-	27	-100.00%
Jun	20	-	20	-100.00%
Jul	25	-	25	-100.00%
Aug	18	-	18	-100.00%
Sep	17	-	17	-100.00%
Oct	-	-	-	0.00%
Nov	-	-	-	0.00%
Dec	-	-	-	0.00%
Jan	0	-	0	-100.00%
Feb	-	-	-	0.00%
Mar	-	-	-	0.00%
Total	140	-	140	-100.00%

Tonnage							Budget	Projected	Projected
	2019/2020	2020/2021	2020/2021	Difference to Budget		2020/2021	2020/2021	2020/2021	2020/2021
	Outturn	Budget	Forecast	Tonnes	Percentage	£/Tonne	Cost £	Cost £	Variance £
Batteries	-	-	-	-	-	61.00	-	-	-
Clinical Waste	66	66	55	10	-15.9%	600.00	39,394	33,115	6,279
Co-Mingled	20,355	19,774	23,354	3,580	18.1%	28.00	553,663	653,911	100,247
Detritus Waste	2,841	2,694	2,726	32	1.2%	83.00	223,582	226,220	2,638
Electricals	2	2	2	1	35.8%	53.50	93	126	33
Fridges	153	172	109	63	-36.5%	52.00	8,963	5,688	3,275
Gas Bottles	1	0	4	3	1202.2%	139.50	40	514	475
General Waste	75,666	74,482	80,124	5,643	7.6%	154.00	11,470,199	12,339,156	868,958
Carpet	-	-	-	-	-	154.00	-	-	-
Green Waste	449	498	489	9	-1.8%	103.00	51,261	50,333	927
Inert Waste	15	11	19	8	76.1%	31.50	335	590	255
Paint & Oil	-	-	-	-	-	132.50	-	-	-
Paper & Cardboard	-	-	2	2	-	18.00	-	28	28
Scrap Metals	4	0	10	10	4574.9%	21.97	5	227	222
Textiles	-	-	-	-	-	199.50	-	-	-
Tyres	1	1	8	7	1038.6%	297.00	209	2,383	2,174
Wood	-	-	-	-	-	110.50	-	-	-
Grand Total	99,551	97,699	106,902	9,203	9.4%	Sub-Total	12,347,734	13,311,838	964,104
Contamination	2,602	2,504	3,097	593	23.7%	154.00	385,616	476,984	91,368
Grand Total							12,733,350	13,788,823	1,055,472

Forecast Tonnes			
	2021/2022	2022/2023	2023/2024
Batteries	-	-	-
Clinical Waste	55	55	55
Co-Mingled	23,354	23,354	23,169
Detritus Waste	2,726	2,726	2,704
Electricals	2	2	2
Fridges	109	109	109
Gas Bottles	4	4	4
General Waste	80,124	80,124	79,491
Carpet	-	-	-
Green Waste	489	489	485
Inert Waste	19	19	19
Paint & Oil	-	-	-
Paper & Cardboard	2	2	2
Scrap Metals	10	10	10
Textiles	-	-	-
Tyres	8	8	8
Wood	-	-	-
Grand Total	106,902	106,902	106,057
Contamination	3,097	3,097	3,073

Co-Mingled Contamination					
	2016/2017	2017/2018	2018/2019	2019/2020	2020/2021
Apr	13.2%	15.6%	14.1%	11.7%	8.9%
May	12.7%	11.9%	12.8%	11.9%	13.9%
Jun	17.9%	15.4%	14.1%	13.8%	13.1%
Jul	16.4%	16.2%	15.1%	12.0%	13.8%
Aug	16.1%	16.8%	14.8%	13.2%	13.8%
Sep	14.3%	11.3%	16.2%	11.8%	16.1%
Oct	14.3%	15.4%	13.2%	15.4%	13.3%
Nov	12.2%	16.0%	13.4%	11.5%	13.3%
Dec	13.3%	14.9%	15.5%	11.9%	13.3%
Jan	16.3%	14.4%	15.2%	15.2%	13.3%
Feb	16.1%	12.2%	13.3%	14.0%	13.3%
Mar	13.9%	17.5%	11.9%	10.9%	13.3%
Average	14.7%	14.8%	14.1%	12.8%	13.3%
				Budget	12.7%

Working Days					
	2019/2020	2020/2021	2021/2022	2022/2023	2023/2024
Total	254	253	253	253	251
Diff from Year before		-1	0	0	-2
Change		-0.39%	0.00%	0.00%	-0.79%

General Waste Tonnes				
	2019/2020	2020/2021	Difference	
Apr	6,318	6,796	478	7.57%
May	6,693	6,689	4	-0.06%
Jun	6,046	7,215	1,169	19.34%
Jul	6,923	7,061	137	1.98%
Aug	6,104	6,107	3	0.05%
Sep	6,136	6,683	547	8.92%
Oct	6,616	6,992	376	5.68%
Nov	6,183	6,534	351	5.68%
Dec	6,348	6,708	361	5.68%
Jan	6,328	6,688	360	5.68%
Feb	5,521	5,835	314	5.68%
Mar	6,450	6,816	366	5.68%
Total	75,666	80,124	4,459	5.89%

Co-Mingled Tonnes				
	2019/2020	2020/2021	Difference	
Apr	1,608	1,823	215	13.39%
May	1,698	1,875	177	10.42%
Jun	1,565	2,078	513	32.74%
Jul	1,744	2,011	267	15.32%
Aug	1,550	1,622	72	4.66%
Sep	1,575	1,789	214	13.59%
Oct	1,726	1,977	251	14.52%
Nov	1,719	1,969	250	14.52%
Dec	1,920	2,199	279	14.52%
Jan	1,956	2,240	284	14.52%
Feb	1,526	1,747	222	14.52%
Mar	1,766	2,022	256	14.52%
Total	20,355	23,354	2,999	14.74%

Detritus Waste Tonnes				
	2019/2020	2020/2021	Difference	
Apr	172	187	16	9.12%
May	219	199	19	-8.89%
Jun	183	212	29	15.57%
Jul	208	194	14	-6.91%
Aug	232	218	14	-5.99%
Sep	246	201	45	-18.29%
Oct	283	271	12	-4.23%
Nov	441	423	19	-4.23%
Dec	304	292	13	-4.23%
Jan	200	192	8	-4.23%
Feb	190	182	8	-4.23%
Mar	164	157	7	-4.23%
Total	2,841	2,726	115	-4.06%

Co-mingled Contamination Tonnes				
	2019/2020	2020/2021	Difference	
Apr	188	242	53	28.32%
May	203	249	46	22.76%
Jun	215	276	60	28.04%
Jul	209	267	58	27.56%
Aug	204	215	11	5.55%
Sep	186	237	51	27.56%
Oct	267	262	4	-1.63%
Nov	198	261	63	31.73%
Dec	229	292	63	27.63%
Jan	298	297	1	-0.21%
Feb	214	232	18	8.49%
Mar	192	268	76	39.85%
Total	2,602	3,097	496	19.05%

Green Waste Tonnes				
	2019/2020	2020/2021	Difference	
Apr	8	14	7	87.99%
May	12	16	4	35.01%
Jun	17	23	5	31.32%
Jul	19	16	3	-14.58%
Aug	16	14	1	-8.25%
Sep	19	15	4	-20.23%
Oct	18	20	2	8.75%
Nov	26	28	2	8.75%
Dec	47	52	4	8.75%
Jan	237	258	21	8.75%
Feb	21	23	2	8.75%
Mar	10	11	1	8.75%
Total	449	489	40	8.84%

Wood Waste Tonnes				
	2019/2020	2020/2021	Difference	
Apr	-	-	-	0.00%
May	-	-	-	0.00%
Jun	-	-	-	0.00%
Jul	-	-	-	0.00%
Aug	-	-	-	0.00%
Sep	-	-	-	0.00%
Oct	-	-	-	0.00%
Nov	-	-	-	0.00%
Dec	-	-	-	0.00%
Jan	-	-	-	0.00%
Feb	-	-	-	0.00%
Mar	-	-	-	0.00%
Total	-	-	-	0.00%

Tonnage							Budget	Projected	Projected
	2019/2020	2020/2021	2020/2021	Difference to Budget		2020/2021	2020/2021	2020/2021	2020/2021
	Outturn	Budget	Forecast	Tonnes	Percentage	£/Tonne	Cost £	Cost £	Variance £
Batteries	24	31	28	- 2	-7%	61.00	1,867	1,732	- 136
Clinical Waste	-	-	-	-		600.00	-	-	-
Co-Mingled	538	588	247	- 341	-58.0%	28.00	16,477	6,920	- 9,558
Detritus Waste	-	-	-	-		83.00	-	-	-
Electricals	726	733	661	- 72	-9.8%	53.50	39,219	35,390	- 3,829
Fridges	79	76	75	- 2	-2.3%	52.00	3,972	3,883	- 89
Gas Bottles	-	13	3	- 10	-75.0%	139.50	1,794	449	- 1,345
General Waste	8,865	8,957	8,016	- 940	-10.5%	154.00	1,379,324	1,234,490	- 144,834
Carpet	375	392	368	- 24	-6.1%	154.00	60,350	56,642	- 3,708
Green Waste	3,171	3,186	2,667	- 519	-16.3%	103.00	328,151	274,718	- 53,432
Inert Waste	1,677	1,803	1,531	- 272	-15.1%	31.50	56,807	48,230	- 8,577
Paint & Oil	17	18	19	1	5.7%	132.50	2,378	2,514	136
Paper & Cardboard	962	977	958	- 19	-2.0%	18.00	17,584	17,238	- 346
Scrap Metals	666	658	559	- 100	-15.1%	21.97	14,465	12,275	- 2,190
Textiles	254	257	236	- 21	-8.1%	199.50	51,333	47,169	- 4,163
Tyres	-	-	-	-		297.00	-	-	-
Wood	3,773	4,041	3,080	- 962	-23.8%	110.50	446,578	340,311	- 106,267
Grand Total	21,128	21,731	18,449	- 3,283	-15.1%	Sub-Total	2,288,704	1,963,072	- 325,632
Contamination	69	75	35	- 40	-53.6%	154.00	11,550	5,362	- 6,188
						Grand Total	2,300,254	1,968,434	- 331,820

Forecast Tonnes			
	2021/2022	2022/2023	2023/2024
Batteries	28	28	28
Clinical Waste	-	-	-
Co-Mingled	247	247	245
Detritus Waste	-	-	-
Electricals	661	661	656
Fridges	75	75	74
Gas Bottles	3	3	3
General Waste	8,016	8,016	7,953
Carpet	368	368	365
Green Waste	2,667	2,667	2,646
Inert Waste	1,531	1,531	1,519
Paint & Oil	19	19	19
Paper & Cardboard	958	958	950
Scrap Metals	559	559	554
Textiles	236	236	235
Tyres	-	-	-
Wood	3,080	3,080	3,055
Grand Total	18,449	18,449	18,303
Contamination	35	35	35

Co-Mingled Contamination					
	2016/2017	2017/2018	2018/2019	2019/2020	2020/2021
Apr	12.6%	15.0%	14.0%	11.4%	9.9%
May	12.6%	14.3%	12.2%	13.2%	13.1%
Jun	14.8%	13.2%	13.9%	13.1%	11.6%
Jul	12.9%	16.6%	15.1%	12.4%	14.3%
Aug	13.2%	16.9%	14.8%	14.0%	14.8%
Sep	13.5%	12.5%	16.3%	12.5%	15.3%
Oct	12.9%	14.3%	15.5%	12.5%	14.1%
Nov	13.7%	14.0%	13.6%	12.5%	14.1%
Dec	13.4%	15.4%	16.4%	12.7%	14.1%
Jan	15.1%	14.5%	14.7%	15.0%	14.1%
Feb	14.3%	13.4%	13.4%	13.9%	14.1%
Mar	14.8%	14.6%	12.8%	11.4%	14.1%
Average	13.6%	14.6%	14.6%	12.8%	14.1%
				Budget	12.7%

Working Days					
	2019/2020	2020/2021	2021/2022	2022/2023	2023/2024
Total	254	253	253	253	251
Diff from Year before		-1	0	0	-2
Change		-0.39%	0.00%	0.00%	-0.79%

General Waste Tonnes					
	2019/2020	2020/2021	Difference		
Apr	873	1	- 872	-99.92%	
May	949	599	- 349	-36.82%	
Jun	784	1,065	281	35.87%	
Jul	867	1,053	187	21.57%	
Aug	897	1,008	111	12.42%	
Sep	772	929	157	20.37%	
Oct	663	598	- 65	-9.79%	
Nov	628	567	- 61	-9.79%	
Dec	608	549	- 60	-9.79%	
Jan	669	603	- 65	-9.79%	
Feb	586	529	- 57	-9.79%	
Mar	570	514	- 56	-9.79%	
Total	8,865	8,016	- 849	-9.58%	

Co-Mingled Tonnes					
	2019/2020	2020/2021	Difference		
Apr	55	-	- 55	-100.00%	
May	56	5	- 51	-91.00%	
Jun	60	29	- 31	-51.90%	
Jul	55	34	- 20	-37.15%	
Aug	47	39	- 8	-16.99%	
Sep	37	35	- 2	-6.39%	
Oct	32	15	- 17	-54.18%	
Nov	39	18	- 21	-54.18%	
Dec	55	25	- 30	-54.18%	
Jan	41	19	- 22	-54.18%	
Feb	28	13	- 15	-54.18%	
Mar	34	15	- 18	-54.18%	
Total	538	247	- 291	-54.07%	

Detritus Waste Tonnes				
	2019/2020	2020/2021	Difference	
Apr	-	-	-	0.00%
May	-	-	-	0.00%
Jun	-	-	-	0.00%
Jul	-	-	-	0.00%
Aug	-	-	-	0.00%
Sep	-	-	-	0.00%
Oct	-	-	-	0.00%
Nov	-	-	-	0.00%
Dec	-	-	-	0.00%
Jan	-	-	-	0.00%
Feb	-	-	-	0.00%
Mar	-	-	-	0.00%
Total	-	-	-	0.00%

Co-mingled Contamination Tonnes				
	2019/2020	2020/2021	Difference	
Apr	6	-	- 6	-100.00%
May	7	1	- 7	-91.04%
Jun	8	3	- 5	-57.37%
Jul	7	5	- 2	-27.40%
Aug	7	6	- 1	-12.08%
Sep	5	5	1	14.67%
Oct	4	2	- 2	-48.27%
Nov	5	3	- 2	-48.20%
Dec	7	4	- 3	-49.15%
Jan	6	3	- 3	-56.89%
Feb	4	2	- 2	-53.46%
Mar	4	2	- 2	-43.41%
Total	69	35	- 34	-49.62%

Green Waste Tonnes				
	2019/2020	2020/2021	Difference	
Apr	363	-	- 363	-100.00%
May	407	293	- 113	-27.85%
Jun	372	448	75	20.27%
Jul	334	365	31	9.18%
Aug	356	322	- 34	-9.43%
Sep	296	364	68	22.93%
Oct	211	177	- 34	-16.10%
Nov	226	189	- 36	-16.10%
Dec	174	146	- 28	-16.10%
Jan	157	132	- 25	-16.10%
Feb	120	101	- 19	-16.10%
Mar	155	130	- 25	-16.10%
Total	3,171	2,667	- 503	-15.88%

Wood Waste Tonnes				
	2019/2020	2020/2021	Difference	
Apr	363	13	- 351	-96.53%
May	321	91	- 231	-71.79%
Jun	313	389	76	24.27%
Jul	409	443	34	8.19%
Aug	370	398	28	7.70%
Sep	363	416	54	14.74%
Oct	270	220	- 50	-18.55%
Nov	277	226	- 51	-18.55%
Dec	276	225	- 51	-18.55%
Jan	256	209	- 48	-18.55%
Feb	271	221	- 50	-18.55%
Mar	283	230	- 52	-18.55%
Total	3,773	3,080	- 693	-18.37%

Tonnage							Budget	Projected	Projected
	2019/2020	2020/2021	2020/2021	Difference to Budget		2020/2021	2020/2021	2020/2021	2020/2021
	Outturn	Budget	Forecast	Tonnes	Percentage	£/Tonne	Cost £	Cost £	Variance £
Batteries	25	31	29	- 3	-8%	61.00	1,908	1,753	- 156
Clinical Waste	88	89	74	- 15	-17.1%	600.00	53,634	44,455	- 9,179
Co-Mingled	68,100	66,978	70,377	3,399	5.1%	28.00	1,875,386	1,970,567	95,181
Detritus Waste	4,829	4,843	4,509	- 335	-6.9%	83.00	402,006	374,229	- 27,776
Electricals	887	861	770	- 91	-10.5%	53.50	46,060	41,205	- 4,855
Fridges	546	549	463	- 86	-15.7%	52.00	28,528	24,056	- 4,472
Gas Bottles	7	17	9	- 8	-48.0%	139.50	2,433	1,265	- 1,168
General Waste	285,297	283,180	276,851	- 6,329	-2.2%	154.00	43,609,764	42,635,071	- 974,693
Carpet	375	392	368	- 24	-6.1%	154.00	60,350	56,642	- 3,708
Green Waste	4,911	4,886	4,592	- 294	-6.0%	103.00	503,210	472,955	- 30,255
Inert Waste	1,699	1,816	1,558	- 258	-14.2%	31.50	57,194	49,067	- 8,127
Paint & Oil	17	18	19	1	5.7%	132.50	2,378	2,514	136
Paper & Cardboard	1,385	1,364	1,398	35	2.6%	18.00	24,544	25,172	628
Scrap Metals	803	786	682	- 104	-13.2%	21.97	17,260	14,974	- 2,286
Textiles	254	257	236	- 21	-8.1%	199.50	51,333	47,169	- 4,163
Tyres	10	7	12	5	64.5%	297.00	2,205	3,627	1,423
Wood	3,914	4,242	3,080	- 1,162	-27.4%	110.50	468,704	340,311	- 128,394
Grand Total	373,146	370,316	365,027	- 5,289	-1.4%	Sub-Total	47,069,711	45,980,746	- 1,088,966
Contamination	8,760	8,496	9,266	770	9.1%	154.00	1,308,384	1,426,892	118,508
						Grand Total	48,378,095	47,407,637	- 970,458

Forecast Tonnes			
	2021/2022	2022/2023	2023/2024
Batteries	29	29	29
Clinical Waste	74	74	74
Co-Mingled	70,377	70,377	69,821
Detritus Waste	4,509	4,509	4,473
Electricals	770	770	764
Fridges	463	463	459
Gas Bottles	9	9	9
General Waste	276,851	276,851	274,663
Carpet	368	368	365
Green Waste	4,592	4,592	4,556
Inert Waste	1,558	1,558	1,545
Paint & Oil	19	19	19
Paper & Cardboard	1,398	1,398	1,387
Scrap Metals	682	682	676
Textiles	236	236	235
Tyres	12	12	12
Wood	3,080	3,080	3,055
Grand Total	365,027	365,027	362,141
Contamination	9,266	9,266	9,192

Co-Mingled Contamination					
	2016/2017	2017/2018	2018/2019	2019/2020	2020/2021
Apr	12.6%	15.0%	14.0%	11.4%	9.9%
May	12.6%	14.3%	12.2%	13.2%	13.1%
Jun	14.8%	13.2%	13.9%	13.1%	11.6%
Jul	12.9%	16.6%	15.1%	12.4%	14.3%
Aug	13.2%	16.9%	14.8%	14.0%	14.8%
Sep	13.5%	12.5%	16.3%	12.5%	15.3%
Oct	12.9%	14.3%	15.5%	12.5%	14.1%
Nov	13.7%	14.0%	13.6%	12.5%	14.1%
Dec	13.4%	15.4%	16.4%	12.7%	14.1%
Jan	15.1%	14.5%	14.7%	15.0%	14.1%
Feb	14.3%	13.4%	13.4%	13.9%	14.1%
Mar	14.8%	14.6%	12.8%	11.4%	14.1%
Average	13.6%	14.6%	14.6%	12.8%	14.1%
				Budget	12.7%

Working Days					
	2019/2020	2020/2021	2021/2022	2022/2023	2023/2024
Total	254	253	253	253	251
Diff from Year before		-1	0	0	-2
Change		-0.39%	0.00%	0.00%	-0.79%

General Waste Tonnes				
	2019/2020	2020/2021	Difference	
Apr	23,884	21,803	- 2,081	-8.71%
May	24,958	22,524	- 2,434	-9.75%
Jun	23,230	24,902	1,671	7.19%
Jul	25,797	24,620	- 1,177	-4.56%
Aug	23,448	22,449	- 999	-4.26%
Sep	23,293	24,256	962	4.13%
Oct	24,994	24,203	- 790	-3.16%
Nov	23,913	23,102	- 811	-3.39%
Dec	24,280	23,501	- 778	-3.21%
Jan	23,562	22,850	- 712	-3.02%
Feb	20,927	20,259	- 668	-3.19%
Mar	23,012	22,383	- 629	-2.73%
Total	285,298	276,851	- 8,447	-2.96%

Co-Mingled Tonnes				
	2019/2020	2020/2021	Difference	
Apr	5,420	5,452	32	0.59%
May	5,780	5,609	- 171	-2.97%
Jun	5,369	6,259	890	16.57%
Jul	5,976	6,140	164	2.75%
Aug	5,176	5,152	- 24	-0.47%
Sep	5,499	5,695	196	3.57%
Oct	5,953	6,134	181	3.04%
Nov	5,660	5,820	160	2.82%
Dec	6,279	6,472	193	3.07%
Jan	6,177	6,426	249	4.04%
Feb	5,122	5,296	174	3.40%
Mar	5,689	5,923	234	4.12%
Total	68,099	70,377	2,278	3.35%

Detritus Waste Tonnes				
	2019/2020	2020/2021	Difference	
Apr	309	313	4	1.29%
May	358	340	- 18	-4.96%
Jun	348	351	3	0.82%
Jul	346	321	- 25	-7.33%
Aug	392	352	- 40	-10.18%
Sep	412	339	- 73	-17.72%
Oct	481	450	- 31	-6.47%
Nov	746	699	- 47	-6.36%
Dec	472	445	- 27	-5.68%
Jan	345	322	- 23	-6.69%
Feb	346	321	- 25	-7.26%
Mar	273	256	- 17	-6.26%
Total	4,829	4,509	- 320	-6.62%

Co-mingled Contamination Tonnes				
	2019/2020	2020/2021	Difference	
Apr	616	540	- 76	-12.30%
May	762	737	- 25	-3.34%
Jun	704	727	23	3.32%
Jul	738	876	138	18.68%
Aug	724	763	39	5.42%
Sep	686	871	184	26.87%
Oct	743	807	64	8.58%
Nov	705	764	58	8.29%
Dec	797	851	54	6.80%
Jan	925	849	- 76	-8.19%
Feb	710	698	- 12	-1.77%
Mar	649	783	134	20.67%
Total	8,760	9,266	506	5.77%

Green Waste Tonnes				
	2019/2020	2020/2021	Difference	
Apr	399	50	- 349	-87.44%
May	465	360	- 105	-22.55%
Jun	454	542	88	19.48%
Jul	423	458	35	8.35%
Aug	431	408	- 23	-5.23%
Sep	396	461	65	16.36%
Oct	350	332	- 18	-5.11%
Nov	514	515	1	0.19%
Dec	397	397	0	-0.13%
Jan	674	691	16	2.40%
Feb	210	201	- 9	-4.27%
Mar	197	177	- 20	-10.57%
Total	4,911	4,592	- 319	-6.49%

Wood Waste Tonnes				
	2019/2020	2020/2021	Difference	
Apr	395	13	- 383	-96.81%
May	348	91	- 258	-73.98%
Jun	333	389	56	16.77%
Jul	434	443	9	2.06%
Aug	389	398	10	2.48%
Sep	380	416	36	9.58%
Oct	270	220	- 50	-18.55%
Nov	277	226	- 51	-18.55%
Dec	276	225	- 51	-18.55%
Jan	256	209	- 48	-18.67%
Feb	271	221	- 50	-18.55%
Mar	283	230	- 52	-18.55%
Total	3,913	3,080	- 833	-21.29%

## Appendix A

After **6** months of **2020/2021**

### General Waste Delivered (Tonnes)

<u>General Waste Delivered (Tonnes)</u>						Annual		2020/2021	Budget			
					TO DATE	FORECAST	Change	Change	Budget	Change	Change	
	2016/2017	2017/2018	2018/2019	2019/2020	2020/2021	2020/2021	Tonnes	Percent	Tonnes	Tonnes	Percent	
HF	60,602	58,478	57,772	56,021	27,973	55,480	-	542	-0.97%	55,421	58	0.11%
KC	60,292	59,730	59,581	58,209	22,739	44,929	-	13,280	-22.81%	57,965	- 13,035	-22.49%
LA	92,784	89,451	89,226	86,536	44,633	88,302		1,765	2.04%	86,356	1,946	2.25%
WA	79,034	77,251	76,028	75,666	40,551	80,124		4,459	5.89%	74,482	5,643	7.58%
WRWA	11,792	10,749	9,713	8,865	4,656	8,016	-	849	-9.58%	8,957	- 940	-10.50%
Total	304,504	295,660	292,321	285,298	140,553	276,851	-	8,447	-2.96%	283,180	- 6,329	-2.24%
Change	-	8,844	- 3,339	- 7,023	-	8,447						
Percentage Change		-2.90%	-1.13%	-2.40%		-2.96%						

### Co-Mingled Waste Delivered (Tonnes)

Co-Mingled Waste Delivered (Tonnes)						Annual			2020/2021	Budget		
					TO DATE	FORECAST		Change	Change	Budget	Change	Change
	2016/2017	2017/2018	2018/2019	2019/2020	2020/2021	2020/2021		Tonnes	Percent	Tonnes	Tonnes	Percent
HF	11,520	11,305	11,146	11,703	6,043	12,380		677	5.79%	11,543	836	7.25%
KC	16,307	15,889	16,087	15,961	6,064	12,154	-	3,806	-23.85%	15,995	- 3,840	-24.01%
LA	18,388	19,902	19,858	19,543	10,858	22,242		2,699	13.81%	19,078	3,164	16.59%
WA	20,180	19,900	20,173	20,355	11,199	23,354		2,999	14.74%	19,774	3,580	18.11%
WRWA	339	437	601	538	142	247	-	291	-54.07%	588	- 341	-58.00%
Total	66,733	67,433	67,864	68,099	34,307	70,377		2,278	3.35%	66,978	3,399	5.08%
Change		700	431	235		2,278						
Percentage Change		1.05%	0.64%	0.35%		3.35%						

### Co-Mingled Contamination (Percentage)

					TO DATE	FORECAST	Change in
	2016/2017	2017/2018	2018/2019	2019/2020	2020/2021	2020/2021	Percentage Point
HF	14.02%	14.09%	15.19%	13.62%	13.00%	13.00%	-0.62%
KC	11.86%	12.23%	11.66%	10.64%	10.79%	10.79%	0.15%
LA	13.90%	16.46%	16.40%	14.31%	14.44%	14.44%	0.14%
WA	14.73%	14.80%	14.14%	12.78%	13.26%	13.26%	0.48%
WRWA	13.64%	14.59%	14.57%	12.84%	14.09%	14.09%	1.24%

### Co-Mingled Contamination (Tonnes)

Co-Mingled Contamination (Tonnes)								Annual		2017/2018	2020/2021	Budget	
					TO DATE	FORECAST		Change	Change	Budget	Budget	Change	Change
	2016/2017	2017/2018	2018/2019	2019/2020	2020/2021	2020/2021		Tonnes	Percent	Percentage	Tonnes	Tonnes	Percent
HF	1,616	1,593	1,693	1,594	786	1,609		15	0.94%	13.5%	1,555	54	3.49%
KC	1,934	1,943	1,875	1,699	654	1,312	-	387	-22.78%	10.6%	1,690	- 378	-22.38%
LA	2,556	3,276	3,257	2,796	1,568	3,212		416	14.89%	14.0%	2,672	540	20.22%
WA	2,973	2,946	2,852	2,602	1,485	3,097		496	19.05%	12.7%	2,504	593	23.69%
WRWA	46	64	88	69	20	35	-	34	-49.62%	12.7%	75	- 40	-53.58%
Total	9,124	9,821	9,764	8,760	4,514	9,266		506	5.77%	12.7%	8,496	770	9.06%
Change		697	-	57	-	1,005		506					
Percentage Change		7.64%	-0.58%	-10.29%		5.77%							

### Green Waste Delivered (Tonnes)

Green Waste Delivered (Tonnes)						Annual			2020/2021		Budget	
					TO DATE	FORECAST	Change	Change	Budget	Change	Change	
	2016/2017	2017/2018	2018/2019	2019/2020	2020/2021	2020/2021	Tonnes	Percent	Tonnes	Tonnes	Percent	
HF	114	115	121	83	0	83	0	0.16%	4	80	2187.04%	
KC	359	387	429	475	197	508	33	6.94%	463	45	9.78%	
LA	241	298	546	733	191	845	112	15.28%	736	109	14.81%	
WA	552	503	340	449	98	489	40	8.84%	498	- 9	-1.81%	
WRWA	3,217	3,065	3,190	3,171	1,792	2,667	- 503	-15.88%	3,186	- 519	-16.28%	
Total	4,483	4,368	4,626	4,911	2,280	4,592	- 319	-6.49%	4,886	- 294	-6.01%	
Change	-	115	257	285	-	319						
Percentage Change		-2.57%	5.89%	6.16%		-6.49%						

## Appendix A

### Clinical Waste Delivered (Tonnes)

<u>Clinical Waste Delivered (Tonnes)</u>							Annual			2020/2021		Budget	
	2016/2017	2017/2018	2018/2019	2019/2020	TO DATE 2020/2021	FORECAST 2020/2021	Change Tonnes	Change Percent		Budget Tonnes	Change Tonnes	Change Percent	
HF	30	27	23	18	8	15	-	3	-18.95%	19	-	4	-20.85%
KC	3	2	2	1	1	1	-	0	-17.79%	1	-	0	-31.33%
LA	2	1	3	3	2	3		0	7.21%	4	-	1	-13.61%
WA	60	65	64	66	28	55	-	11	-16.53%	66	-	10	-15.94%
WRWA	-	-	-	-	-	-		-	0.00%	-	-	-	0.00%
Total	95	96	92	88	38	74	-	14	-16.24%	89	-	15	-17.11%
Change		1	-	4	-	3		14					
Percentage Change		0.57%	-4.14%	-3.51%		-16.24%							

### Detritus Waste Delivered (Tonnes)

<u>Detritus Waste Delivered (Tonnes)</u>							Annual		2020/2021		Budget		
					TO DATE	FORECAST	Change	Change		Budget	Change	Change	
	2016/2017	2017/2018	2018/2019	2019/2020	2020/2021	2020/2021	Tonnes	Percent		Tonnes	Tonnes	Percent	
HF	813	733	611	449	179	393	-	55	-12.36%	411	-	18	-4.26%
KC	536	499	623	1,021	372	776	-	245	-24.00%	1,222	-	446	-36.50%
LA	587	610	760	518	256	614		96	18.51%	518	97	18.72%	
WA	2,482	2,539	2,992	2,841	1,210	2,726	-	115	-4.06%	2,694	32	1.18%	
WRWA	-	-	-	-	-	-	-	-	0.00%	-	-	-	0.00%
Total	4,418	4,380	4,986	4,829	2,016	4,509	-	320	-6.62%	4,843	-	335	-6.91%
Change	-	38	606	157	-	320							
Percentage Change		-0.85%	13.82%	-3.15%		-6.62%							

### Battery Waste Delivered (Tonnes)

Battery Waste Delivered (Tonnes)							Annual		2020/2021		Budget		
	2016/2017	2017/2018	2018/2019	2019/2020	TO DATE 2020/2021	FORECAST 2020/2021	Change Tonnes	Change Percent	Budget Tonnes	Change Tonnes	Change Percent		
HF	1	1	1	1	0	0	-	0	-42.98%	1	-	0	-49.18%
KC	-	-	-	-	-	-	-	0.00%	-	-	-	0.00%	
LA	-	-	-	-	-	-	-	0.00%	-	-	-	0.00%	
WA	0	-	-	-	-	-	-	0.00%	-	-	-	0.00%	
WRWA	25	22	15	24	13	28	4	16.53%	31	-	2	-7.27%	
Total	25	23	15	25	13	29	4	15.10%	31	-	3	-8.17%	
Change	-	2	-	8	10	4							
Percentage Change		-9.16%	-33.48%	63.14%		15.10%							

### Electrical Waste Delivered (Tonnes)

<u>Electrical Waste Delivered (Tonnes)</u>							Annual		2020/2021		Budget	
	2016/2017	2017/2018	2018/2019	2019/2020	TO DATE 2020/2021	FORECAST 2020/2021	Change Tonnes	Change Percent	Budget Tonnes	Change Tonnes	Change Percent	
HF	44	15	9	20	8	37	17	81.81%	11	26	229.23%	
KC	49	27	33	26	17	40	14	52.52%	21	20	94.59%	
LA	194	172	122	113	55	29	84	-74.40%	94	-	65	-69.17%
WA	3	10	3	2	2	2	1	53.52%	2	1	35.76%	
WRWA	806	738	751	726	351	661	-	65	733	-	72	-9.76%
Total	1,095	964	917	888	433	770	-	118	861	-	91	-10.54%
Change	-	131	-	47	-	118						
Percentage Change		-11.96%	-4.83%	-3.19%		-13.26%						

### Fridge Waste Delivered (Tonnes)

<u>Fridge Waste Delivered (Tonnes)</u>							Annual			2020/2021	Budget		
					TO DATE	FORECAST	Change	Change		Budget	Change	Change	
	2016/2017	2017/2018	2018/2019	2019/2020	2020/2021	2020/2021	Tonnes	Percent		Tonnes	Tonnes	Percent	
HF	101	94	91	89	44	88	-	1	-1.28%	85		2.82%	
KC	64	61	64	51	22	42	-	9	-17.05%	54	-	12	-22.58%
LA	212	182	179	174	97	149	-	25	-14.45%	160	-	11	-7.17%
WA	123	100	96	153	39	109	-	43	-28.42%	172	-	63	-36.54%
WRWA	86	65	78	79	39	75	-	5	-5.96%	76	-	2	-2.25%
Total	587	503	507	546	241	463	-	83	-15.22%	549	-	86	-15.68%
Change	-	83	4	39	-	83							
Percentage Change		-14.19%	0.76%	7.60%		-15.22%							



## Appendix A

### Gas Bottle Waste Delivered (Tonnes)

	2016/2017	2017/2018	2018/2019	2019/2020	TO DATE 2020/2021	FORECAST 2020/2021	Annual		2020/2021 Budget Tonnes	Budget	
							Change Tonnes	Change Percent		Change Tonnes	Change Percent
HF	1	2	1	1	0	1	0	66.21%	0	1	180.82%
KC	0	1	1	1	1	1	0	38.88%	1	0	50.09%
LA	2	4	3	4	-	-	4	-100.00%	3	3	-100.00%
WA	1	2	1	1	1	4	3	398.30%	0	3	1202.18%
WRWA	-	19	15	-	3	3	3	0.00%	13	10	-74.96%
Total	5	27	21	6	5	9	3	42.54%	17	8	-48.01%
Change		22	-	6	-	15	3				
Percentage Change		461.98%	-21.99%	-70.03%		42.54%					

### Carpet Waste Delivered (Tonnes)

	2016/2017	2017/2018	2018/2019	2019/2020	TO DATE 2020/2021	FORECAST 2020/2021	Annual		2020/2021 Budget Tonnes	Budget	
							Change Tonnes	Change Percent		Change Tonnes	Change Percent
HF	-	-	-	-	-	-	-	0.00%	-	-	0.00%
KC	-	-	-	-	-	-	-	0.00%	-	-	0.00%
LA	-	-	-	-	-	-	-	0.00%	-	-	0.00%
WA	-	-	-	-	-	-	-	0.00%	-	-	0.00%
WRWA	-	-	269	375	178	368	7	-1.94%	392	24	-6.14%
Total	-	-	269	375	178	368	7	-1.94%	392	24	-6.14%
Change		-	269	106	-	7					
Percentage Change				39.28%		-1.94%					

### Inert Waste Delivered (Tonnes)

	2016/2017	2017/2018	2018/2019	2019/2020	TO DATE 2020/2021	FORECAST 2020/2021	Annual		2020/2021 Budget Tonnes	Budget	
							Change Tonnes	Change Percent		Change Tonnes	Change Percent
HF	-	-	-	5	-	5	0	-0.39%	-	5	0.00%
KC	2	-	-	-	2	2	2	0.00%	-	2	0.00%
LA	10	-	1	2	-	-	2	-100.00%	2	2	-100.00%
WA	4	23	0	15	0	19	4	23.05%	11	8	76.06%
WRWA	1,061	1,212	1,624	1,677	930	1,531	146	-8.71%	1,803	272	-15.10%
Total	1,076	1,235	1,625	1,700	933	1,558	142	-8.38%	1,816	258	-14.21%
Change		158	390	75	-	142					
Percentage Change		14.72%	31.62%	4.61%		-8.38%					

### Oil/Paint Waste Delivered (Tonnes)

	2016/2017	2017/2018	2018/2019	2019/2020	TO DATE 2020/2021	FORECAST 2020/2021	Annual		2020/2021 Budget Tonnes	Budget	
							Change Tonnes	Change Percent		Change Tonnes	Change Percent
HF	-	-	0	-	-	-	-	0.00%	-	-	0.00%
KC	-	-	-	-	-	-	-	0.00%	-	-	0.00%
LA	-	-	-	-	-	-	-	0.00%	-	-	0.00%
WA	-	0	-	-	-	-	-	0.00%	-	-	0.00%
WRWA	17	15	17	17	7	19	2	9.43%	18	1	5.72%
Total	17	15	17	17	7	19	2	9.43%	18	1	5.72%
Change	-	1	1	0		2					
Percentage Change		-8.08%	9.04%	2.73%		9.43%					

### Paper/Cardboard Waste Delivered (Tonnes)

	2016/2017	2017/2018	2018/2019	2019/2020	TO DATE 2020/2021	FORECAST 2020/2021	Annual		2020/2021 Budget Tonnes	Budget	
							Change Tonnes	Change Percent		Change Tonnes	Change Percent
HF	-	-	-	-	-	-	-	0.00%	-	-	0.00%
KC	-	-	-	-	-	-	-	0.00%	-	-	0.00%
LA	321	484	439	423	206	439	16	3.84%	387	53	13.59%
WA	-	-	-	-	2	2	2	0.00%	-	2	0.00%
WRWA	806	827	793	962	476	958	4	-0.42%	977	19	-1.97%
Total	1,127	1,311	1,232	1,385	684	1,398	14	1.00%	1,364	35	2.56%
Change		185	-	79	152	14					
Percentage Change		16.39%	-6.02%	12.35%		1.00%					

### Scrap Metal Waste Delivered (Tonnes)

	2016/2017	2017/2018	2018/2019	2019/2020	TO DATE 2020/2021	FORECAST 2020/2021	Annual		2020/2021 Budget Tonnes	Budget	
							Change Tonnes	Change Percent		Change Tonnes	Change Percent
HF	11	13	4	19	5	69	50	262.19%	5	64	1241.69%
KC	1	1	1	0	-	0	0	-0.39%	-	0	0.00%
LA	150	115	112	114	30	43	71	-62.41%	122	79	-64.89%
WA	0	2	0	4	7	10	7	175.14%	0	10	4574.86%
WRWA	697	687	721	666	320	559	108	-16.14%	658	100	-15.14%
Total	859	818	837	803	362	682	122	-15.15%	786	104	-13.24%
Change	-	42	20	34	-	122					
Percentage Change		-4.86%	2.42%	-4.08%		-15.15%					

## Appendix A

### Textile Waste Delivered (Tonnes)

	2016/2017	2017/2018	2018/2019	2019/2020	TO DATE 2020/2021	FORECAST 2020/2021	Annual		2020/2021 Budget Tonnes	Budget	
							Change Tonnes	Change Percent		Change Tonnes	Change Percent
HF	-	-	-	-	-	-	-	0.00%	-	-	0.00%
KC	-	-	-	-	-	-	-	0.00%	-	-	0.00%
LA	-	-	-	-	-	-	-	0.00%	-	-	0.00%
WA	-	-	-	-	-	-	-	0.00%	-	-	0.00%
WRWA	209	205	234	254	130	236	-	-6.86%	257	-	-8.11%
Total	209	205	234	254	130	236	-	-6.86%	257	-	-8.11%
Change	-	5	30	20	-	17					
Percentage Change		-2.25%	14.42%	8.46%		-6.86%					

### Tyre Waste Delivered (Tonnes)

	2016/2017	2017/2018	2018/2019	2019/2020	TO DATE 2020/2021	FORECAST 2020/2021	Annual		2020/2021 Budget Tonnes	Budget	
							Change Tonnes	Change Percent		Change Tonnes	Change Percent
HF	0	0	0	1	0	1	0	32.94%	-	1	0.00%
KC	0	0	-	-	-	-	-	0.00%	-	-	0.00%
LA	8	12	12	8	2	3	-	-54.59%	7	-	-48.35%
WA	2	1	1	1	1	8	7	1115.92%	1	7	1038.60%
WRWA	-	-	0	-	-	-	-	0.00%	-	-	0.00%
Total	11	13	13	9	3	12	3	38.15%	7	5	64.53%
Change		2	1	-	5	3					
Percentage Change		13.45%	4.52%	-34.03%		38.15%					

### Wood Waste Delivered (Tonnes)

	2016/2017	2017/2018	2018/2019	2019/2020	TO DATE 2020/2021	FORECAST 2020/2021	Annual		2020/2021 Budget Tonnes	Budget	
							Change Tonnes	Change Percent		Change Tonnes	Change Percent
HF	-	-	-	-	-	-	-	0.00%	-	-	0.00%
KC	-	1	1	1	-	-	-	-100.00%	1	-	-100.00%
LA	273	245	251	140	-	-	-	-100.00%	200	-	-100.00%
WA	-	-	-	-	-	-	-	0.00%	-	-	0.00%
WRWA	3,223	3,165	3,474	3,773	1,750	3,080	-	-18.37%	4,041	-	-23.80%
Total	3,496	3,411	3,726	3,913	1,750	3,080	-	-21.29%	4,242	-	-27.39%
Change	-	86	315	187	-	833					
Percentage Change		-2.45%	9.24%	5.02%		-21.29%					

### Total Waste Delivered (Tonnes)

	2016/2017	2017/2018	2018/2019	2019/2020	TO DATE 2020/2021	FORECAST 2020/2021	Annual		2020/2021 Budget Tonnes	Budget	
							Change Tonnes	Change Percent		Change Tonnes	Change Percent
HF	73,236	70,785	69,779	68,410	34,261	68,553	143	0.21%	67,500	1,052	1.56%
KC	77,613	76,597	76,822	75,746	29,415	58,454	-	-22.83%	75,721	-	-22.80%
LA	113,172	111,477	111,510	108,311	56,330	112,669	4,358	4.02%	107,665	5,005	4.65%
WA	102,442	100,395	99,698	99,551	53,136	106,902	7,351	7.38%	97,699	9,203	9.42%
WRWA	22,277	21,208	21,494	21,128	10,789	18,449	-	-12.68%	21,731	-	-15.11%
Total	388,741	380,462	379,303	373,146	183,932	365,027	-	-2.18%	370,316	-	-1.43%
Change	-	8,279	-	1,159	-	8,119					
Percentage Change		-2.13%	-0.30%	-1.62%		-2.18%					



# Reduce, reuse, recycle



## Waste Education Programme for Schools [Covid-secure Risk Assessment available]

We deliver **FREE**, curriculum linked workshops, assemblies in your school, to encourage pupils and staff to **REDUCE, REUSE, RECYCLE** (the 3 R's).

*We are flexible about how to run our workshops. Please talk to us about what suits your school.*



### Workshops amended for Autumn term



#### EYFS

**Another Fine Mess:** start finding out about waste and recycling with Mr Fox, and make a recycled fox puppet/bookmark. (30mins)

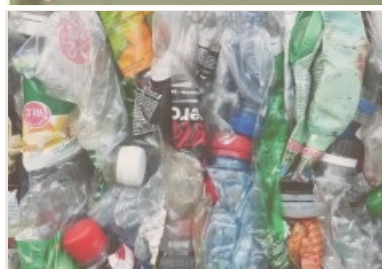
In-school

Or online



#### KS1

**Michael Recycle:** what can you do to be a recycling superhero? Plus colour in your own superhero and help save the earth. (30mins)



#### KS2

**Plastic Planet:** just how big is our problem with plastic? Find out where our plastic waste ends up, how it is affecting our planet and what actions we can take. (40mins)

Perhaps we could accompany you on a walk in the park and deliver our 3R's message along the way. Using litter (safely) to illustrate the types of materials that get thrown away every day, their impact on the planet, and how we can reduce, reuse or recycle to help alleviate the problem.

Or perhaps  
in the park?

For schools in Lambeth, Wandsworth, Kensington & Chelsea and Hammersmith & Fulham

**Contact:** 020 8875 8887 : [education@wrwa.gov.uk](mailto:education@wrwa.gov.uk)  
[wrwa.gov.uk/schools](http://wrwa.gov.uk/schools)



## **The Department for Business, Energy and Industrial Strategy – Consultation on the Ecodesign for Energy-Related Products and Energy Information Regulations 2021 – WRWA response**

The Authority fully supports the intentions of the Ecodesign for Energy-Related Products and Energy Information Regulations 2021 which will result in significant carbon savings. The Authority is responsible for waste management it is therefore particularly supportive of the Ecodesign measures for household products that will ensure that the product design is such that products have increased durability, reparability, recyclability and will facilitate material recovery which will result in the reduction of waste.

**Question 22** Do you agree with our intention to introduce, in the draft regulations, new eco-design requirements for household washing machines/washer-dryers in GB to reflect what the UK agreed at EU level as a Member State in January 2019? If you do not agree, please provide reasons supported by evidence where possible.

**Yes.**

**Question 23** Do you agree with our intention to implement new GB ecodesign requirements for household washing machines/washer-dryers from March 2021 reflecting what the UK agreed at EU level as a Member State in January 2019?

**Yes.**

**Question 24** Do you agree that March 2021 is an achievable implementation date for new ecodesign requirements for household washing machines/washer-dryers for small and micro businesses? If you do not agree, what support or allowances could be given to small and micro businesses to help them meet this implementation date?

**Yes.**

**Question 25** Do you agree with our intention, as set out in the draft regulations in respect of household washing machines/washer-dryers, to review the regulations 7 years from their date of application? If you do not agree, please provide reasons supported by evidence where possible.

**Yes.**

**Question 33** Do you agree with our intention to introduce, in the draft regulations, new eco-design requirements for household dishwashers in GB to reflect what the UK agreed at EU level as a Member State in January 2019? If you do not agree, please provide reasons supported by evidence where possible.

**Yes.**

**Question 34** Do you agree with our intention to implement the new GB ecodesign requirements for household dishwashers from March 2021 reflecting what the UK agreed at EU level as a Member State in January 2019?

**Yes.**

**Question 35** Do you agree that March 2021 is an achievable implementation date for new ecodesign requirements for household dishwashers small and micro businesses? If you do not agree, what support or allowances could be given to small and micro businesses to help them meet this implementation date?

**Yes.**

**Question 36** Do you agree with our intention, as set out in the draft regulations in respect of household dishwashers, to review the regulations 7 years from their date of application? If you do not agree, please provide reasons supported by evidence where possible.

**Yes.**

**Question 44** Do you agree with our intention to introduce, in the draft regulations, new eco-design requirements for household refrigeration in GB to reflect what the UK agreed at EU level as a Member State in December 2018? If you do not agree, please provide reasons supported by evidence where possible.

**Yes.**

**Question 45** Do you agree with our intention to implement the new GB ecodesign requirements for household refrigeration from March 2021 reflecting what the UK agreed at EU level as a Member State in December 2018?

**Yes.**

**Question 46** Do you agree that March 2021 is an achievable implementation date for new ecodesign requirements for household refrigeration for small and micro businesses? If you do not agree, what support or allowances could be given to small and micro businesses to help them meet this implementation date?

**Yes.**

**Question 47** Do you agree with our intention, as set out in the draft regulations in respect of household refrigeration, to review the regulations 7 years from their date of application? If you do not agree, please provide reasons supported by evidence where possible.

**Yes.**

**Question 67** Do you agree with our intention to introduce, in the draft regulations, new eco-design requirements for electronic displays in GB to reflect what the UK agreed at EU level as a Member State in December 2018? If you do not agree, please provide reasons supported by evidence where possible.

**Yes.**

**Question 68** Do you agree with our intention to implement the proposed GB eco-design requirements for electronic displays from March 2021 reflecting what the UK agreed at EU level as a Member State in December 2018?

**Yes.**

**Question 69** Do you agree that March 2021 is an achievable implementation date for new ecodesign and energy labelling requirements for electronic displays for small and micro businesses? If you do not agree, what support or allowances could be given to small and micro businesses to help them meet this implementation date?

**Yes.**

**Question 70** Do you agree with our intention, as set out in the draft regulations in respect of electronic displays, to review the regulations 3 years from their date of application? If you do not agree, please provide reasons supported by evidence where possible.

**Yes.**