

Paper No. WRWA **23-16**

WESTERN RIVERSIDE WASTE AUTHORITY

MEETING	14 th June 2023
REPORT AUTHOR/DATE	General Manager <i>(Contact Mark Broxup - Tel. 020 8871 2788)</i> 6 th June 2023
SUBJECT	A Report outlining progress with operations and other matters since the previous meeting of the Authority.
CONTENTS	Page 1 Executive Summary Pages 1 to 9 Items reported on Page 10 Recommendations Pages 11 - 14 Appendix A - Tonnage Tables Pages 15-17 Appendix B - New Acres – Images of the Smugglers Way facility from the new Development.
STATUS	Open
BACKGROUND PAPERS	None

This page is left blank intentionally

EXECUTIVE SUMMARY

1. This paper brings Members up to date on operational and other matters, which, in themselves, do not warrant the production of a separate paper. The majority of these matters are for Members' information, but where approval is sought this is referred to in the report and summarised at the end. The specific matters covered in this report are:-
 - a) Operations
 - b) Fatality at the Smugglers Way Materials Recycling Facility
 - c) Wandsworth Bridge Closure
 - d) Performance Monitoring
 - e) Education Programme – 2022/23 & 2023/24
 - f) HWRC User Satisfaction survey 2023
 - g) New Acres – new development on Smugglers Way
 - h) Constituent Council New Recycling Initiatives
 - i) REP Construction
 - j) Progress on Governance Review
 - k) Annual Report
 - l) Items costing between £5,000 and £30,000
 - m) Comments of the Treasurer
 - n) Recommendations

OPERATIONS

Smugglers Way

2. Since the last Authority committee meeting, operations at Smugglers Way have been affected by two major fire incidents, traffic congestion and an accident on site (see paragraphs 3 to 4 below).
 - a) At 10:30am on Saturday, 4th February 2023, a Cory member of staff activated the fire alarm after observing smoke coming from Compactor No. 7 and flames in the hopper. Site staff were evacuated. At 10.40am the London Fire Brigade (LFB) were called to site with all Borough vehicles being diverted to Cringle Dock Transfer Station. At 10:49am the first fire engine arrived on site with three arriving in total. At 11:55am the LFB declared the site safe.
 - b) The MRF fire system detected a fire in the MRF bunker at 12.45am on Thursday, 11th May 2023. The fire alarm was activated, alerting Cory management and emergency services. The automated fire cannons activated which prevented fire spread allowing sufficient time for the fire serves to set up their equipment. A total of eight engines were dispatched to site along

with a river boat and a high-pressure hose unit. The fire was extinguished at approximately 3:05am but fire procedures require the waste in the bunker be rotated to ensure that is the case. At 5:07am the rotation had been completed and the London Fire Brigade (LFB) left site. The LFB Arson Department suspected the cause of the fire was a battery within the bunker.

The Transfer Station operated as usual later that day, but the MRF was unable to accept any material up until lunchtime due to the necessary clean-up operation. Dedicated Borough recycling vehicles were directed to deliver their recycling to a Cory facility in Pensbury Place, SW8 4TP, while Borough vehicles wishing to drop off both waste and recycling (split backs) continued to deliver to Smugglers Way with the recycling being deposited into containers, as opposed to tipping directly into the MRF.

The operation of the HWRC was unaffected.

c) Disruption to service due to traffic congestion

Disruption to service was caused by works being undertaken at the north end of Wandsworth Bridge on 26th April 2023. The temporary traffic lights in place brought the surrounding road network to a standstill. Fortunately, as the congestion materialised at lunchtime, the effect on deliveries by Borough refuse collection vehicles was less than it had been on previous occasions but Boroughs were provided with the option of delivering to Cringle Dock for the remainder of the afternoon. The same problems were experienced by members of the public using the Household Waste and Recycling Centre, with residents experiencing great difficulty leaving the site, the last resident leaving at 7.13pm.

FATALITY AT THE SMUGGLERS WAY MATERIALS RECYCLING FACILITY

3. It is with great sadness that I must report a fatality at the Smugglers Way Materials Recycling Facility at around 13:20 hours on 24th April 2023.
4. The matter is the subject of an ongoing investigation by the Health and Safety Executive, and it is not appropriate to comment further at this time but I'm sure the Authority would wish to express its sincere condolences to the family and friends of the deceased on behalf of itself, and all colleagues working on site.

WANDSWORTH BRIDGE CLOSURE

5. Officers have been notified by Wandsworth Council of the closure of Wandsworth Bridge for essential repairs from Monday, 24th July 2023 for approximately 10 weeks. Although the bridge will remain open for pedestrians and cyclists, it will be closed to vehicles. The closure of the Bridge will have an obvious impact on Hammersmith & Fulham and Kensington and Chelsea waste and recycling vehicles accessing the Smugglers Way Waste facility. Officers are in discussions with Cory and Borough Officers to ensure contingency arrangements are in place ahead of 24th July 2023.

PERFORMANCE MONITORING

Introduction

6. Detailed tonnage tables are attached as Appendix A to this report. The modelling to forecast the outturn figures for 2023/24 compares performance against the corresponding period in the previous year. The tables shown set out:
 - a) the tonnages of each waste type (including co-mingled recycling contamination) delivered by each constituent council in the current financial year up to 31st May 2023, together with projected outturn tonnages, compared against those budgeted for and the previous financial year's outturn; and
 - b) comparisons of the tonnages of each major waste type handled by each constituent council on an annual basis.

Points to Highlight

7. If the trend in the overall level of waste arisings from the first two months of 2023/24 continues throughout the remainder of the financial year, there would be a 3.38% increase on the tonnage received in 2022/23 and a 4.03% increase on budget. Increases are currently predicted for three boroughs and at the Household Waste and Recycling Centre, but Kensington and Chelsea's ("KC") tonnages are predicted to remain broadly the same as the previous year.
8. However, it worth highlighting that April and May have not been 'typical' months with April having extremely high rainfall and May extremely low rainfall. May also had three bank holidays due to the Coronation so making long term predictions on waste arisings at this stage is difficult.

EDUCATION PROGRAMME

9. The Education Team has had a busy year, with a return to pre-pandemic levels of the number of tours and on-site visits.
10. The programme has been fully booked for the last two terms, and the Team are fully booked up for the remainder of the Academic year.
11. By the end of this school year they will have had 114 class visits at Smugglers Way and provided 31 in- school workshops.
12. There has been lots of interest from local residents, community groups and universities and the Team have continued to run regular visits to site when workload permits. In 2022/23 there have been 24 on-site Adult tours and three off-site visits.

Looking forward to the 2023/24 Academic Year

13. Officers would like to recommend a number of adjustments to the Education Programme, with effect from September 2023.
 - a. A focus on in-school work with secondary schools (Key Stage 3 and 4)
 - b. An increased focus and targeting of colleges and universities within the Authority area
 - c. Adult workshops on-site and in the community focussing on waste reduction and reuse.
14. As demand for on-site visits is generally greater than term time dates allow, an increased focus on b. and c. would likely require that we reduce the number of primary school on-site visits. Officers therefore propose that from the commencement of the Autumn Term, on-site School bookings are limited to Key Stage 2 and above (Year 3 and above). Whilst officers appreciate that there will be some disappointment from Primary Schools who have visited with their KS1 pupils every year, they will of course be eligible to visit in future years and the Education Team would still be in a position to offer talks and workshops to all year groups in schools.
15. Officers recommend that the Authority approve the adjustments made to the Education Programme, as detailed in paragraphs 13 to 14 above.

SMUGGLERS WAY USER SATISFACTION SURVEY

Background

16. An online Household Waste and Recycling Centre User Satisfaction Survey commenced on Monday, 30th January 2023 and ran until Wednesday, 26th April 2023. 1,054 responses have been received.
17. The last Satisfaction Survey was undertaken in September 2019 and involved in-person interviews at the Centre. This survey was an online survey, whereby residents who have visited the Centre automatically received an email inviting them to participate, two hours after their booking slot. Residents who book in to use the Centre by telephone, will also be invited to participate, by telephone.
18. The questions residents were asked were largely the same as in previous years, to ensure comparisons can be made but with an additional question added to gain some feedback on the level of satisfaction of the Booking system.

Key Findings

19. Please note that due to percentages being rounded up or down to the nearest whole number, the totals do not always add up to 100%.

Frequency of use

20. 45% of respondents confirmed that they, or a member of their household, had visited the Centre over 5 times in the last 12 months, whilst almost two in every five (38%) had visited between three and five times, with a smaller proportion (17%) confirming they had visited either once or twice

Vast majority found it easy to use the Booking system

21. The vast majority of residents (95%) found it easy to use the Booking system (with 77% confirming they found it Very Easy and 18% found it Quite Easy with a small percentage finding it Not very Easy (3%) or Not at all Easy (2%).

Vast majority satisfied with the queuing time/time taken to drop off their items

22. The vast majority of residents (95%) found the queuing time and time taken to drop off their items Very Satisfactory or Quite Satisfactory, with only 4% confirming they

were Not Very Satisfied or Not at All Satisfied. The satisfaction level recorded in the 2019 Survey was 96%.

Vast majority satisfied with the Centre

23. Between 94% and 98% of respondents were satisfied to some extent with all elements of the Centre. The level of cleanliness and tidiness of the Centre recorded the highest satisfaction amongst users (98%), with the Centre overall recording a satisfaction level of 96%, the range of materials accepted for recycling and reuse 95%, the user-friendliness (layout/access) of the Centre 94%.
24. When compared with previous surveys, satisfaction remains very high with an increase seen for the user-friendliness of the Centre, increasing from 91% in 2019 to 94% in this year's survey. Conversely, satisfaction with queuing time has decreased slightly from 96% to 95%, although comments from residents suggest that they recognise the cause of the delays are mainly due to traffic congestion on the road network surrounding Smugglers Way.

Assistance from staff

25. 36% of respondents said they had been helped by a member of staff on the day of their visit, which is a significantly higher than in the previous surveys (13% in 2019, 24% in 2018 and 28% in 2017).
26. 26% of those who had been helped by a member of staff said that the staff member had reminded them to reuse or recycle items taken to the rubbish containers and a further 21% said they did not (this compares with 45% and 3% respectively in 2019). However, the majority (53%) said this was not applicable to them as they either did not use the rubbish containers (18%) or because they only placed waste in the rubbish containers (35%).
27. 95% of respondents who had been helped by a member of staff said they found them friendly and helpful and 96% found their appearance acceptable (wearing correct uniform and ID badge). 95% found the member of staff knowledgeable and 92% found there were enough staff to advise or assist them. These results are all slightly down when compared with previous surveys.

Ease of Use of Authority website to find recycling reuse information prior to visit

28. Of the 71% of respondents who looked for information of the Authority's website prior to their visit, 77% found it Very Easy (43%) or Quite Easy (34%) to find information on what they could reuse and recycle, with 5% finding it Quite Difficult or Very Difficult. The remaining 18% found it neither Easy nor Difficult. The level of

ease of use is comparable with the 2018 survey figure of 78% and lower than the 2019 figure of 94%.

29. Officers will now evaluate the many comments made by residents in addition to their scoring and any requests for improvements to service highlighted will be considered, and, if necessary, actioned.

NEW ACRES - HOUSING DEVELOPMENT UNDER CONSTRUCTION ON SMUGGLERS WAY

30. Construction of the new housing development on Smugglers Way continues to progress well. WRWA officers met with the Senior Asset Manager of Legal and General Investment Management (LGIM), who will have responsibility for the marketing and letting of the development and Urban Bubble, who will serve as Managing Agents for the development, on Thursday, 18th May 2023 for an update on progress. Authority officers were also provided with the opportunity to view the Smugglers Way HWRC & Transfer Station from different floors and blocks within the development. Views from differing levels of Blocks A1, A2 and A3 (the three blocks overlooking the Authority site) can be seen in Appendix B to this report.
31. Officers had previously been advised that occupancy of the development will commence in four phases, the first being in August 2023. The LGIM officer has now confirmed that the occupation of the block overlooking the HWRC will take place in August 2023 and the two blocks overlooking the Smugglers Way Transfer Station will be occupied from January 2024.
32. It should be noted that the S106 relating to the development requires L&G to notify prospective Occupiers of the proximity of our operations and advise that issues relating to air quality, odour, noise and access may arise. And to further advise that these issues were considered as part of the determination by the local Planning Authority (Wandsworth Council) and that the Council will consider the agent of change principle in relation to any nuisance complaints made by Occupiers against our Smugglers Way Waste and Recycling Facilities (without limiting its discretion to investigate statutory nuisances).
33. Officers will continue to meet with LGIM and Urban Bubble on a regular basis.

CONSTITUENT COUNCIL NEW RECYCLING INITIATIVES

34. At the meeting of the Authority on 22nd September 2010 (Paper No. WRWA 669A) Members instructed the Clerk to write to each of the constituent councils to inform them that, in future, should they wish to make arrangements themselves to recycle

any significant tonnage of waste then, in accordance with Section 48 of the Environment Protection Act 1990, they must, as soon as reasonably practicable, notify the Authority in writing. The Authority will then approve or object to any such proposal at its next available meeting. The Clerk wrote to the constituent councils, as instructed, on 27th October 2010.

35. The constituent councils have not notified the Authority of any new initiatives since the previous Authority meeting.

RIVERSIDE ENERGY PARK

36. Cory has commenced groundworks on its new Energy from Waste (“**EfW**”) Facility as part of the Riverside Energy Park and it is on schedule to be completed in 2026.

Carbon Capture and Hydrogen Production

37. Cory has also submitted an Environmental Impact Assessment (EIA) Scoping Report to the Planning Inspectorate (PINS) in mid April for:
- a) the design of a 1.3 million tonne per annum Carbon Capture and Storage (“**CCS**”) system for up to 95% of the total CO₂ emissions produced by both the Riverside Resource Recovery (where the Authority’s residual waste is managed) and Riverside Energy Park EfW Facilities combined; and
 - b) a facility to produce over 21 tonnes of hydrogen a day via electrolysis sufficient to fuel around 675 Heavy Goods Vehicles (“**HGVs**”) a day or a combination of HGVs and marine vessels.
38. As the feedstock to the two EfW Facilities contains around 50% biogenic content, the CCS project would result in net-negative CO₂ emissions of approximately 0.6 million tonnes a year of CO₂.
39. The Secretary of State has confirmed that the project would be ‘nationally significant’ and should therefore progress through the Planning Act 2008 Development Consent

Order (DCO) consenting procedure. A Preliminary Environmental Impact Report (PEIR) and 'statutory consultation' is expected to commence in October 2023.

40. There is the potential that the carbon capture system could be in place by 2028/29 which is expected to be in a similar timeframe for when EfW is expected to be included in the UK Emissions Trading Scheme ("**UK ETS**").

UK emissions Trading Scheme

41. In 2022 the Government consulted on the UK ETS with a call for evidence on expanding it to include EfW. The consultation estimated that EfW facilities emitted 6.2 MtCO₂e in 2019, representing c.1% of UK emissions, and stated that the Government is looking to explore expanding the UK ETS to and EfW "by the mid-late 2020s.
42. A tonne of waste produces around a tonne of CO₂ of which about 50% is from biogenic material. For the other 50%, the carbon from fossil material the operator would need to purchase UK ETS allowances which have been estimated could cost anywhere between £80 and £400 per tonne and EfW operators will probably look to pass these costs along to their customers including local authorities.
43. Cory's proposed CCS scheme ought to remove the potential for additional ETS costs and by capturing the CO₂ from the biogenic fraction as well may give it the opportunity to sell allowances to other CO₂ producers that could mitigate the cost of the CCS infrastructure.

PROGRESS ON GOVERNANCE REVIEW

44. Cllr. Chowdhury, Chair of the Governance Working Group, has advised that the final Working Group meeting will take place on Monday, 5th June 2023, and

the Governance Review report will be presented at the 27th September 2023 Committee Meeting.

ANNUAL REPORT

45. To help balance the agendas at Authority meetings, the Chairman has agreed that a draft of the 2022/23 Annual report will now be presented to the September 2023 meeting of the Authority.

ITEMS COSTING BETWEEN £5,000 AND £30,000

46. There have been no reportable items of expenditure authorised by officers under delegated powers within the band range of £5,000 to £30,000 since the last Authority meeting.

COMMENTS OF THE TREASURER

47. The Treasurer advises that, as outlined in the February Budget paper (Paper No. WRWA 23-01), constituent councils are always advised to make their own assumptions regarding tonnage levels when setting and monitoring their budgets.

RECOMMENDATIONS

48. It is recommended that the Authority:

- a) approve the suggested revisions to the Education Programme as detailed in paragraphs 13 and 14 above; and
- b) otherwise receives this report as information.

M. Broxup
GENERAL MANAGER

Western Riverside Administration Office
Smugglers Way
Wandsworth
SW18 1JS

6th June 2023

Appendix A

After **2** months of 2023/2024

General Waste Delivered (Tonnes)

	2019/2020	2020/2021	2021/2022	2022/2023	TO DATE	FORECAST	Annual		2023/2024		
					2023/2024	2023/2024	Change Tonnes	Change Percent	Budget Tonnes	Change Tonnes	Budget Change Percent
HF	56,021	55,590	55,435	52,852	8,921	54,952	2,100	3.97%	52,257	2,695	5.16%
KC	58,209	46,755	53,842	55,272	8,845	55,272	1	0.00%	55,509	237	-0.43%
LA	86,536	88,694	87,517	87,083	14,340	90,978	3,895	4.47%	85,540	5,438	6.36%
WA	75,666	80,509	78,795	75,004	12,794	79,329	4,325	5.77%	73,872	5,457	7.39%
WRWA	8,865	9,504	7,939	6,958	1,448	7,753	795	11.43%	6,935	818	11.79%
Total	285,298	281,052	283,526	277,170	46,348	288,285	11,115	4.01%	274,114	14,170	5.17%
Change	-	4,247	2,475	6,357	-	11,115	-	-	-	-	-
Percentage Change	-	-1.49%	0.88%	-2.24%	-	4.01%	-	-	-	-	-

Co-Mingled Waste Delivered (Tonnes)

	2019/2020	2020/2021	2021/2022	2022/2023	TO DATE	FORECAST	Annual		2023/2024		
					2023/2024	2023/2024	Change Tonnes	Change Percent	Budget Tonnes	Change Tonnes	Budget Change Percent
HF	11,703	12,573	12,030	11,149	1,766	11,061	89	-0.79%	10,984	76	0.70%
KC	15,961	12,528	14,076	13,962	2,226	13,800	162	-1.16%	13,959	159	-1.14%
LA	19,543	22,317	20,728	17,223	3,063	17,902	679	3.94%	17,100	802	4.69%
WA	20,355	23,577	21,842	19,343	2,982	18,229	1,113	-5.76%	19,080	850	-4.46%
WRWA	538	373	407	344	60	375	31	9.14%	332	43	12.86%
Total	68,099	71,368	69,082	62,022	10,097	61,367	654	-1.05%	61,456	89	-0.14%
Change	-	3,269	2,286	7,061	-	654	-	-	-	-	-
Percentage Change	-	4.80%	-3.20%	-10.22%	-	-1.05%	-	-	-	-	-

Co-Mingled Contamination (Percentage)

	2019/2020	2020/2021	2021/2022	2022/2023	TO DATE	FORECAST	Change in Percentage Point
	2023/2024	2023/2024			2023/2024	2023/2024	
HF	13.62%	13.93%	16.93%	16.88%	18.45%	18.45%	1.58%
KC	10.64%	11.03%	11.48%	12.29%	9.94%	9.94%	-2.35%
LA	14.31%	14.49%	16.59%	15.23%	14.05%	14.05%	-1.18%
WA	12.78%	13.49%	14.12%	12.67%	13.18%	13.18%	0.51%
WRWA	12.84%	13.90%	14.84%	14.09%	13.69%	13.69%	-0.40%

Co-Mingled Contamination (Tonnes)

	2019/2020	2020/2021	2021/2022	2022/2023	TO DATE	FORECAST	Annual		2017/2018		2023/2024	
					2023/2024	2023/2024	Change Tonnes	Change Percent	Budget Percentage	Budget Tonnes	Change Tonnes	Budget Change Percent
HF	1,594	1,752	2,036	1,881	326	2,041	159	8.48%	16.7%	1,833	208	11.37%
KC	1,699	1,382	1,616	1,716	221	1,372	344	-20.04%	12.5%	1,748	376	-21.50%
LA	2,796	3,233	3,439	2,623	430	2,515	108	-4.12%	15.6%	2,666	151	-5.65%
WA	2,602	3,181	3,084	2,450	393	2,402	48	-1.98%	13.4%	2,554	152	-5.95%
WRWA	69	52	60	48	8	51	3	6.01%	14.3%	48	4	7.85%
Total	8,760	9,600	10,235	8,720	1,379	8,382	338	-3.88%	14.4%	8,848	466	-5.27%
Change	-	840	635	1,516	-	338	-	-	-	-	-	-
Percentage Change	-	9.59%	6.62%	-14.81%	-	-3.88%	-	-	-	-	-	-

Green Waste Delivered (Tonnes)

	2019/2020	2020/2021	2021/2022	2022/2023	TO DATE	FORECAST	Annual		2023/2024		
					2023/2024	2023/2024	Change Tonnes	Change Percent	Budget Tonnes	Change Tonnes	Budget Change Percent
HF	83	98	78	98	-	102	4	4.43%	154	52	-33.93%
KC	475	495	514	469	67	591	122	26.00%	459	132	28.73%
LA	733	608	574	853	134	935	83	9.68%	949	14	-1.46%
WA	449	365	325	287	27	614	327	113.97%	243	371	152.93%
WRWA	3,171	3,099	2,647	2,058	634	2,676	618	30.05%	2,012	664	33.02%
Total	4,911	4,665	4,139	3,764	862	4,919	1,154	30.66%	3,817	1,101	28.85%
Change	-	245	527	374	-	1,154	-	-	-	-	-
Percentage Change	-	-5.00%	-11.29%	-9.04%	-	30.66%	-	-	-	-	-

Appendix A

<u>Clinical Waste Delivered (Tonnes)</u>					Annual				2023/2024 Budget			
	2019/2020	2020/2021	2021/2022	2022/2023	TO DATE 2023/2024	FORECAST 2023/2024	Change Tonnes	Change Percent	Budget Tonnes	Change Tonnes	Change Percent	
HF	18	16	14	12	1	9	-	3	-26.26%	11	3	-24.33%
KC	1	1	1	1	0	2		1	34.98%	1	1	37.64%
LA	3	4	6	6	1	5	-	1	-8.77%	6	1	-12.13%
WA	66	65	75	73	12	73	-	0	-0.01%	73	0	0.03%
WRWA	-	-	-	-	-	-	-	-	0.00%	-	-	0.00%
Total	88	87	96	92	15	89	-	3	-3.34%	92	3	-3.20%
Change		2	9	4								
Percentage Change		-1.85%	10.48%	-4.40%								

<u>Detritus Waste Delivered (Tonnes)</u>					Annual				2023/2024 Budget			
	2019/2020	2020/2021	2021/2022	2022/2023	TO DATE 2023/2024	FORECAST 2023/2024	Change Tonnes	Change Percent	Budget Tonnes	Change Tonnes	Change Percent	
HF	449	463	434	469	66	526		57	12.13%	440	86	19.60%
KC	1,021	806	707	666	102	929		264	39.61%	669	260	38.89%
LA	518	542	562	458	71	498		41	8.89%	471	28	5.87%
WA	2,841	2,861	2,613	2,481	337	2,307	-	175	-7.05%	2,577	-	-10.50%
WRWA	-	-	-	-	-	-	-	-	0.00%	-	-	0.00%
Total	4,829	4,672	4,316	4,074	577	4,260	-	186	4.57%	4,157	103	2.48%
Change		157	356	243								
Percentage Change		-3.24%	-7.61%	-5.62%								

<u>Battery Waste Delivered (Tonnes)</u>					Annual				2023/2024 Budget			
	2019/2020	2020/2021	2021/2022	2022/2023	TO DATE 2023/2024	FORECAST 2023/2024	Change Tonnes	Change Percent	Budget Tonnes	Change Tonnes	Change Percent	
HF	1	0	0	1	-	1		0	4.43%	1	0	4.84%
KC	-	-	-	-	-	-	-	-	0.00%	-	-	0.00%
LA	-	-	-	-	-	-	-	-	0.00%	-	-	0.00%
WA	-	-	-	-	-	-	-	-	0.00%	-	-	0.00%
WRWA	24	32	26	22	4	28		6	24.73%	28	0	0.12%
Total	25	32	26	23	4	28	-	6	24.23%	28	0	0.21%
Change		7	6	4								
Percentage Change		28.69%	-17.56%	-13.52%								

<u>Electrical Waste Delivered (Tonnes)</u>					Annual				2023/2024 Budget			
	2019/2020	2020/2021	2021/2022	2022/2023	TO DATE 2023/2024	FORECAST 2023/2024	Change Tonnes	Change Percent	Budget Tonnes	Change Tonnes	Change Percent	
HF	20	10	13	10	2	18		8	72.07%	9	9	92.55%
KC	26	32	15	8	0	2	-	6	-74.47%	7	5	-72.05%
LA	113	106	70	91	2	10	-	81	-89.09%	52	42	-80.80%
WA	2	4	1	1	0	0	-	0	-37.69%	1	0	-34.80%
WRWA	726	792	673	575	93	500	-	75	-13.02%	563	62	-11.06%
Total	888	944	772	686	98	531	-	155	-22.57%	632	101	-15.97%
Change		56	172	86								
Percentage Change		6.36%	-18.25%	-11.19%								

<u>Fridge Waste Delivered (Tonnes)</u>					Annual				2023/2024 Budget			
	2019/2020	2020/2021	2021/2022	2022/2023	TO DATE 2023/2024	FORECAST 2023/2024	Change Tonnes	Change Percent	Budget Tonnes	Change Tonnes	Change Percent	
HF	89	81	88	78	13	79		0	0.18%	75	4	4.81%
KC	51	39	45	42	4	29	-	13	-30.94%	39	10	-24.73%
LA	174	172	151	132	13	93	-	39	-29.76%	104	11	-10.61%
WA	153	75	59	71	12	94		22	30.83%	60	34	56.93%
WRWA	79	74	56	51	10	55		4	8.62%	51	5	9.10%
Total	546	440	400	375	51	350	-	26	-6.88%	328	22	6.56%
Change		105	40	25								
Percentage Change		-19.30%	-9.19%	-6.13%								

<u>Gas Bottle Waste Delivered (Tonnes)</u>					Annual				2023/2024 Budget			
	2019/2020	2020/2021	2021/2022	2022/2023	TO DATE 2023/2024	FORECAST 2023/2024	Change Tonnes	Change Percent	Budget Tonnes	Change Tonnes	Change Percent	
HF	1	1	1	1	0	4		2	213.05%	1	3	462.83%
KC	1	1	2	5	1	10		5	90.91%	5	6	126.36%
LA	4	1	2	2	-	-	-	2	-100.00%	2	2	-100.00%
WA	1	1	1	0	0	0	-	0	-65.48%	0	0	-61.75%
WRWA	-	16	24	27	-	28		1	4.43%	30	2	-6.41%
Total	6	20	30	36	1	42	-	6	17.29%	38	4	11.64%
Change		14	10	6								
Percentage Change		218.55%	48.08%	20.17%								

Appendix A

<u>Carpet Waste Delivered (Tonnes)</u>							Annual		2023/2024 Budget		
	2019/2020	2020/2021	2021/2022	2022/2023	TO DATE 2023/2024	FORECAST 2023/2024	Change Tonnes	Change Percent	Budget Tonnes	Change Tonnes	Change Percent
HF	-	-	-	-	-	-	-	0.00%	-	-	0.00%
KC	-	-	-	-	-	-	-	0.00%	-	-	0.00%
LA	-	-	-	-	-	-	-	0.00%	-	-	0.00%
WA	-	-	-	-	-	-	-	0.00%	-	-	0.00%
WRWA	375	365	281	-	-	-	-	0.00%	-	-	0.00%
Total	375	365	281	-	-	-	-	0.00%	-	-	0.00%
Change	-	10	84	281	-	-	-	-	-	-	0.00%
Percentage Change		-2.66%	-23.01%	-100.00%							

<u>Inert Waste Delivered (Tonnes)</u>							Annual		2023/2024 Budget		
	2019/2020	2020/2021	2021/2022	2022/2023	TO DATE 2023/2024	FORECAST 2023/2024	Change Tonnes	Change Percent	Budget Tonnes	Change Tonnes	Change Percent
HF	5	-	-	-	-	-	-	0.00%	-	-	0.00%
KC	-	2	-	-	-	-	-	0.00%	-	-	0.00%
LA	2	-	5	5	6	11	6	117.02%	-	11	0.00%
WA	15	4	-	-	-	-	-	0.00%	-	-	0.00%
WRWA	1,677	1,891	1,508	1,068	236	997	72	-6.70%	995	1	0.14%
Total	1,700	1,897	1,513	1,073	242	1,008	65	-6.10%	995	13	1.28%
Change	-	197	384	439	-	65	-	-	-	-	-
Percentage Change		11.58%	-20.25%	-29.05%		-6.10%					

<u>Oil/Paint/Rigid Plastics Waste Delivered (Tonnes)</u>							Annual		2023/2024 Budget		
	2019/2020	2020/2021	2021/2022	2022/2023	TO DATE 2023/2024	FORECAST 2023/2024	Change Tonnes	Change Percent	Budget Tonnes	Change Tonnes	Change Percent
HF	-	-	0	0	-	-	0	-100.00%	0	0	-100.00%
KC	-	0	-	-	-	-	-	0.00%	-	-	0.00%
LA	-	-	6	27	6	44	17	63.36%	192	148	-76.91%
WA	-	-	-	-	-	-	-	0.00%	-	-	0.00%
WRWA	17	16	39	151	16	191	39	26.08%	410	219	-53.50%
Total	17	16	45	179	22	235	56	31.47%	602	367	-60.98%
Change	-	1	28	134	-	56	-	-	-	-	-
Percentage Change		-5.31%	171.38%	301.08%		31.47%					

<u>Paper/Cardboard Waste Delivered (Tonnes)</u>							Annual		2023/2024 Budget		
	2019/2020	2020/2021	2021/2022	2022/2023	TO DATE 2023/2024	FORECAST 2023/2024	Change Tonnes	Change Percent	Budget Tonnes	Change Tonnes	Change Percent
HF	-	-	-	-	-	-	-	0.00%	-	-	0.00%
KC	-	-	-	-	-	-	-	0.00%	-	-	0.00%
LA	423	423	323	239	39	187	52	-21.68%	264	77	-29.00%
WA	-	2	-	-	-	-	-	0.00%	-	-	0.00%
WRWA	962	1,171	1,023	876	153	933	57	6.45%	847	85	10.07%
Total	1,385	1,595	1,346	1,115	192	1,120	5	0.42%	1,111	9	0.79%
Change	-	211	249	231	-	5	-	-	-	-	-
Percentage Change		15.21%	-15.61%	-17.15%		0.42%					

<u>Scrap Metal Waste Delivered (Tonnes)</u>							Annual		2023/2024 Budget		
	2019/2020	2020/2021	2021/2022	2022/2023	TO DATE 2023/2024	FORECAST 2023/2024	Change Tonnes	Change Percent	Budget Tonnes	Change Tonnes	Change Percent
HF	19	10	16	21	4	22	1	6.90%	19	3	13.84%
KC	0	-	4	0	-	0	0	4.43%	0	0	4.84%
LA	114	62	61	62	5	27	35	-56.16%	51	24	-47.03%
WA	4	7	-	-	-	-	-	0.00%	-	-	0.00%
WRWA	666	699	684	589	112	627	38	6.51%	549	78	14.30%
Total	803	779	764	672	121	677	5	0.74%	620	57	9.21%
Change	-	25	15	92	-	5	-	-	-	-	-
Percentage Change		-3.06%	-1.86%	-12.09%		0.74%					

<u>Textile Waste Delivered (Tonnes)</u>							Annual		2023/2024 Budget		
	2019/2020	2020/2021	2021/2022	2022/2023	TO DATE 2023/2024	FORECAST 2023/2024	Change Tonnes	Change Percent	Budget Tonnes	Change Tonnes	Change Percent
HF	-	-	-	-	-	-	-	0.00%	-	-	0.00%
KC	-	-	-	-	-	-	-	0.00%	-	-	0.00%
LA	-	-	-	-	-	-	-	0.00%	-	-	0.00%
WA	-	-	-	-	-	-	-	0.00%	-	-	0.00%
WRWA	254	287	260	250	43	253	3	1.35%	243	10	4.03%
Total	254	287	260	250	43	253	3	1.35%	243	10	4.03%
Change	-	33	27	11	-	3	-	-	-	-	-
Percentage Change		13.12%	-9.31%	-4.13%		1.35%					

Appendix A

<u>Tyre Waste Delivered (Tonnes)</u>							Annual		2023/2024		
	2019/2020	2020/2021	2021/2022	2022/2023	TO DATE	FORECAST	Change	Change	Budget	Change	Change
					2023/2024	2023/2024	Tonnes	Percent	Tonnes	Tonnes	Percent
HF	1	0	2	0	0	2	2	836.78%	0	2	2410.94%
KC	-	0	-	-	-	-	-	0.00%	-	-	0.00%
LA	8	5	7	7	0	1	6	-88.67%	5	5	-85.22%
WA	1	1	1	1	0	0	1	-84.79%	1	1	-85.00%
WRWA	-	-	12	11	-	12	0	4.43%	1,106	1,094	-98.94%
Total	9	7	22	20	0	15	5	-23.79%	1,113	1,097	-98.64%
Change	-	2	15	2	-	5					
Percentage Change	-18.55%	206.94%	-9.86%			-23.79%					

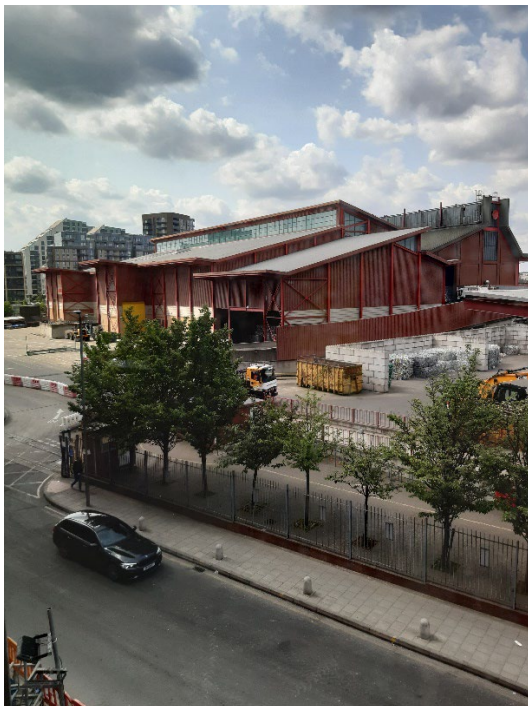
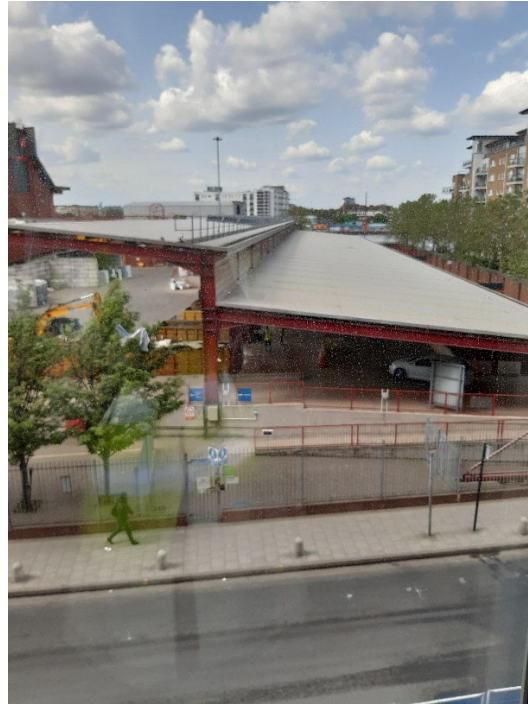
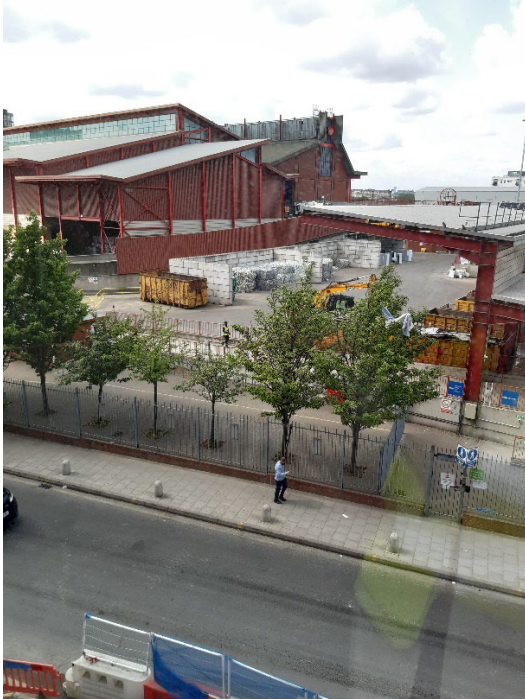
<u>Wood Waste Delivered (Tonnes)</u>							Annual		2023/2024		
	2019/2020	2020/2021	2021/2022	2022/2023	TO DATE	FORECAST	Change	Change	Budget	Change	Change
					2023/2024	2023/2024	Tonnes	Percent	Tonnes	Tonnes	Percent
HF	-	-	-	-	-	-	-	0.00%	-	-	0.00%
KC	1	-	-	-	-	-	-	0.00%	-	-	0.00%
LA	140	-	58	259	61	338	78	30.23%	246	246	-100.00%
WA	-	-	-	-	-	-	-	0.00%	-	-	0.00%
WRWA	3,773	3,808	3,298	3,025	597	3,297	272	8.99%	2,999	298	9.93%
Total	3,913	3,808	3,356	3,284	658	3,634	350	10.67%	3,244	390	12.02%
Change	-	104	452	72		350					
Percentage Change	-2.67%	-11.88%	-2.15%			10.67%					

<u>Total Waste Delivered (Tonnes)</u>							Annual		2023/2024		
	2019/2020	2020/2021	2021/2022	2022/2023	TO DATE	FORECAST	Change	Change	Budget	Change	Change
					2023/2024	2023/2024	Tonnes	Percent	Tonnes	Tonnes	Percent
HF	68,410	68,843	68,112	64,691	10,773	66,774	2,083	3.22%	63,952	2,822	4.41%
KC	75,746	60,660	69,206	70,426	11,245	70,637	210	0.30%	70,649	13	-0.02%
LA	108,311	112,934	110,069	106,448	17,741	111,031	4,582	4.30%	104,982	6,049	5.76%
WA	99,551	107,470	103,711	97,262	16,165	100,646	3,384	3.48%	95,907	4,740	4.94%
WRWA	21,128	22,129	18,877	16,005	3,406	17,725	1,720	10.74%	17,100	625	3.65%
Total	373,146	372,036	369,975	354,833	59,330	366,813	11,979	3.38%	352,590	14,222	4.03%
Change	-	1,110	2,061	15,142		11,979					
Percentage Change	-0.30%	-0.55%	-4.09%			3.38%					

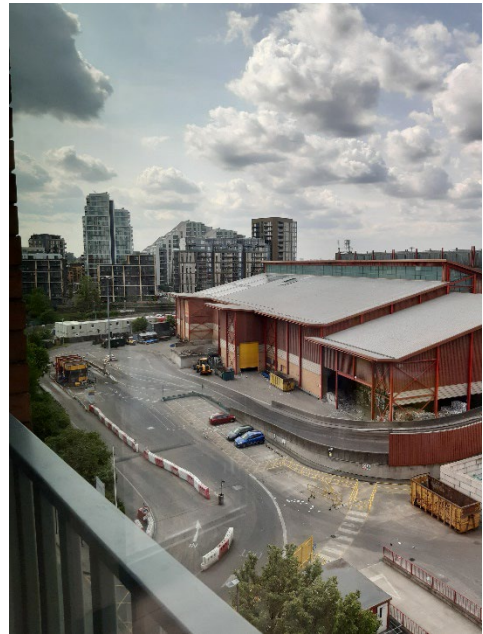
Views of the Smugglers Way facility from the New Development - 18th May 2023

These images show the view from three different blocks overlooking the facility. The photos were taken from the main living/dining room inside residential units.

View from 1st Floor



View from 6th Floor



View from 16th Floor

