

## What happens to your Recycling - KS1

### *Where does it all go?*

Have you ever wondered where all your Rubbish and Recycling goes?

This building (in the picture to the right) is called a 'Waste Transfer Station', but most people call it '**The Tip**' and it's where all your rubbish gets taken to.



As well as rubbish (or General Waste as its called), we also receive the Recycling, which is different to the rubbish, because the Recycling gets used again. Lots of materials can go in your Recycling bin, such as:

#### **Metal Cans**



#### **Paper**



#### **Glass**



#### **Cardboard**

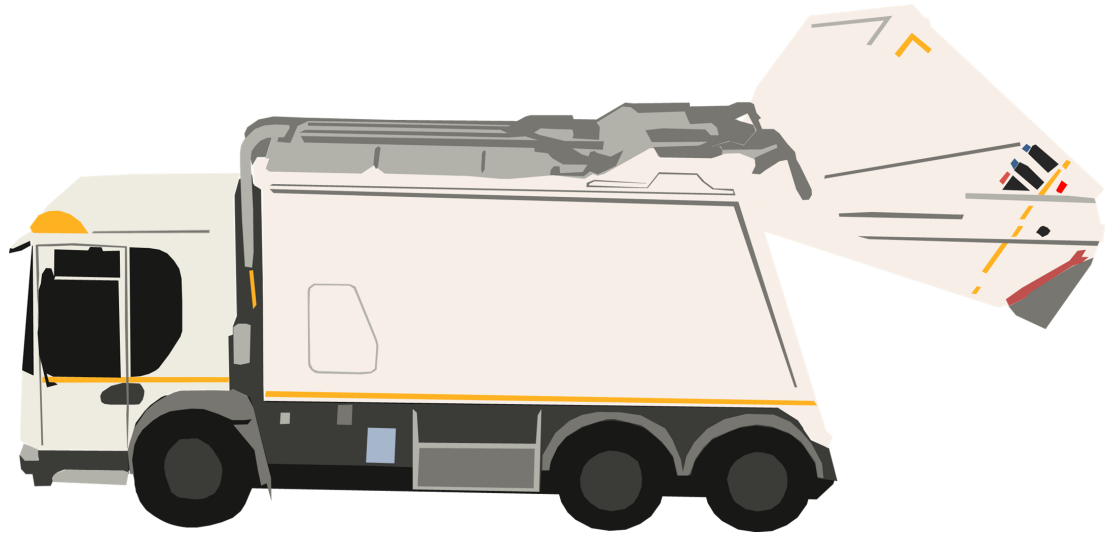


#### **and Plastic**



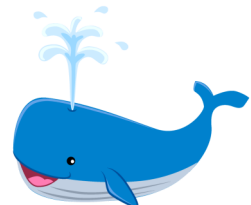
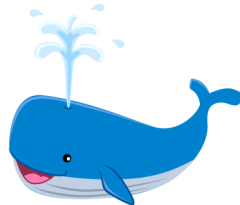
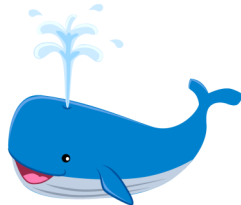
# Reduce, reuse, recycle

Big lorries drive around London, often very early in the morning, picking up all the rubbish and the Recycling from outside your homes, have you ever seen one?



The lorries then bring it all to us. We receive the bins from over a million people. So, that means we get lots and lots of Recycling. Around 350 tonnes every day.

**That weighs more than 3 Blue Whales!**



So, what happens next?  
First, it needs to be sorted.

There are lots of machines that sort the Recycling by their material. Can you see them in this picture?

We get 5 main materials, do you remember what they are?

**(Answers are back on page 1)**



# Reduce, reuse, recycle

Sometimes people put the wrong thing in the Recycling, but there are lots of workers who's job is to spot these things, and take them out by hand.



Here are some examples of things we DON'T want in the Recycling:



**Scrunchy Plastic:** like crisp packets, sweet wrappers, or cling film. Even though they are plastic, they can't be Recycled. We only want Plastic trays, tubs, pots and bottles.



**Tissues:** Even though they are paper, tissues, napkins, and kitchen roll are too thin to be Recycled, and it's often contaminated anyway.



**Food:** We don't want any food in the recycling as it can spoil the paper, so we should never put leftovers in the Recycling, and we always need to rinse out our empty tins and jars.

*(For a full list of Recycling Do's and Don'ts, see page 5)*

So, let's see what happens once the Recycling has been sorted...

# Reduce, reuse, recycle

The sorted Recycling is squashed into a cube, and tied together. This is called a “bale” (like a bale of hay). Can you see the bales of Recycling in the picture below?

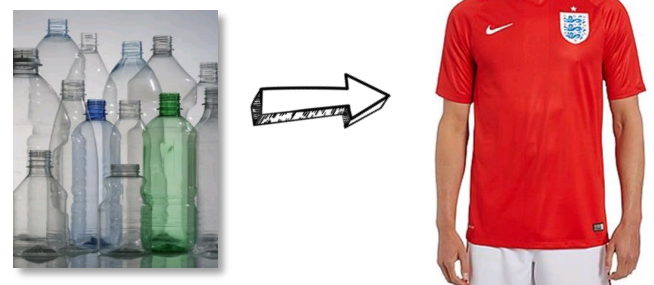


They are sent on to factories, and will be turned into something new!

Maybe they'll be turned into the same type of thing (For example your old newspaper may be turned into another newspaper)



Or maybe it will be turned into something completely different. Like the England football kit, which is made out of recycled plastic bottles



Or maybe your metal tins and glass jars could become a big, tall skyscraper, like The Shard.



**Did you know: 95% of the construction materials for The Shard were Recycled**



# Reduce, reuse, recycle

## Activity:



1. Do you have a Recycling bin at home or at school? You may have to ask your Parent, Carer, or Teacher where it is.
2. Can you make a sign or a poster to go near the Recycling bin that lets people know what to put in there? Can you list the 5 materials?

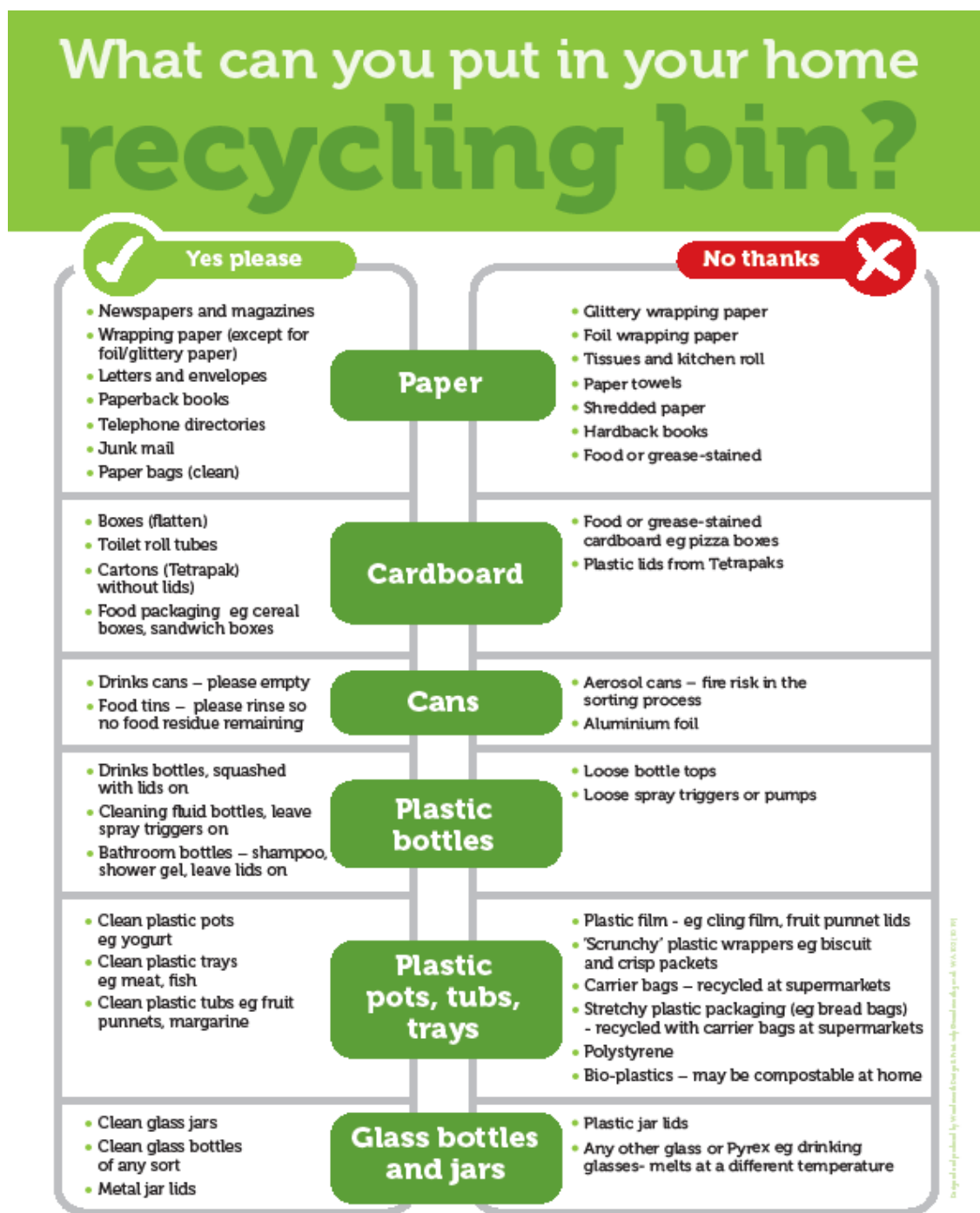
**Paper**

**Cardboard**

**Cans**

**Plastic &  
Glass**

3. You could decorate it with crayons, pencils, paint, or collage, and make it bright and colourful so it stands out

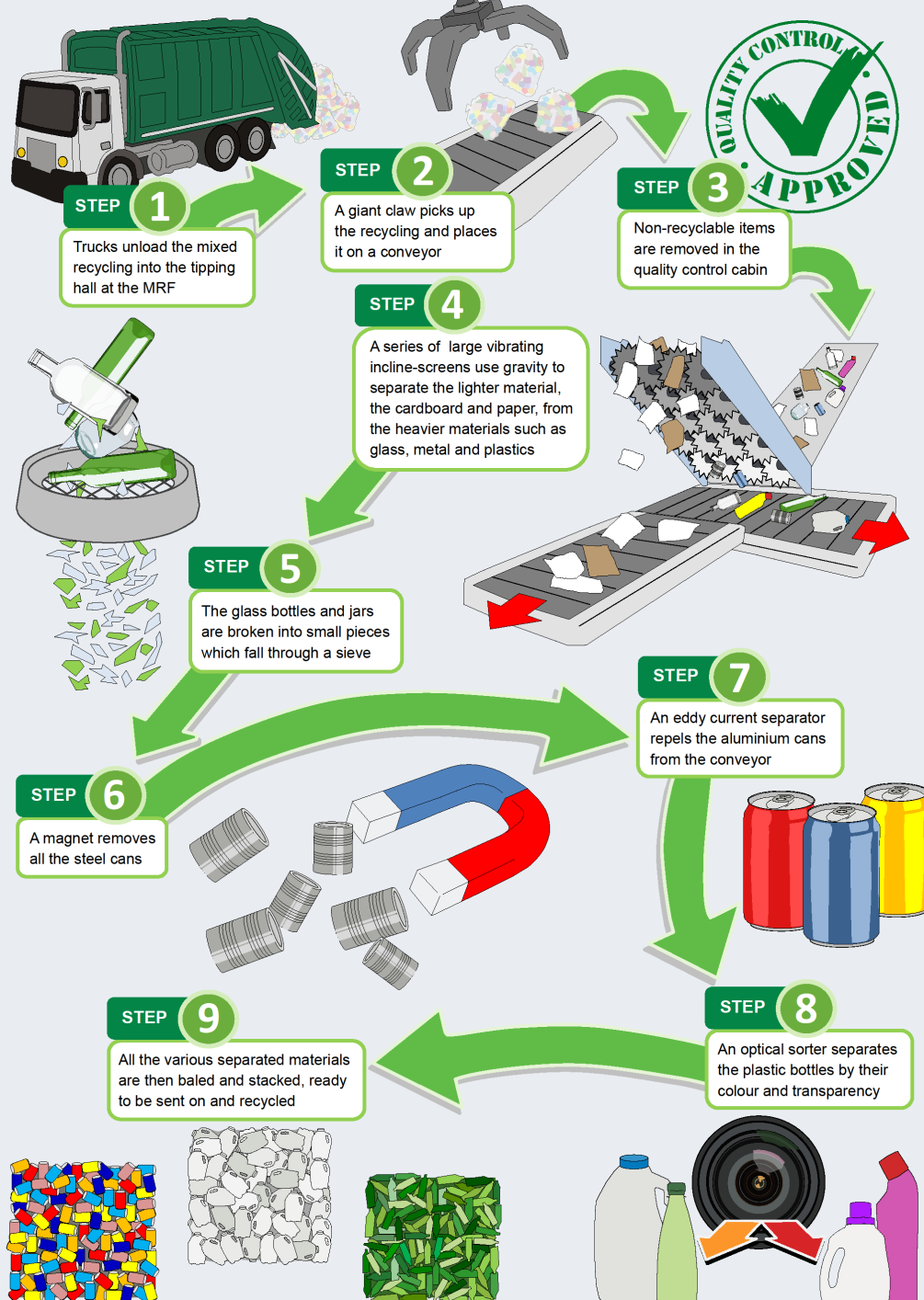


Email: [info@wrwa.gov.uk](mailto:info@wrwa.gov.uk) or call: 020 8871 2788  
[www.wrwa.gov.uk](http://www.wrwa.gov.uk)



**Full list of Recycling Do's and Don'ts:**

## Materials Recycling Facility (MRF) - How our machines work -



### Other useful links:

This goes to a map on our website which shows where each material gets sent to next:

<https://wrra.gov.uk/news/where-does-my-recycling-go/>

A link to a video about WRRWA: <https://wrra.gov.uk/schools-adult-groups/what-happens-to-your-rubbish-and-recycling/>