

What happens to your Recycling - KS2

A look inside the MRF (Materials Recycling Facility)

Have you ever wondered where all your Rubbish and Recycling goes?

This building (pictured right) is called a 'Waste Transfer Station', but most people call it **'The Tip'** and it's where all your rubbish gets taken to.



At WRWA, we receive from 4 London Boroughs (Wandsworth, Lambeth, Kensington & Chelsea, and Hammersmith & Fulham)

As well as rubbish (or General Waste as its called), we also collect Recycling, which is different to the rubbish, because the Recycling gets used again. There are 5 main materials that go in your Recycling bin:

Metal Cans



Paper



Glass



Cardboard

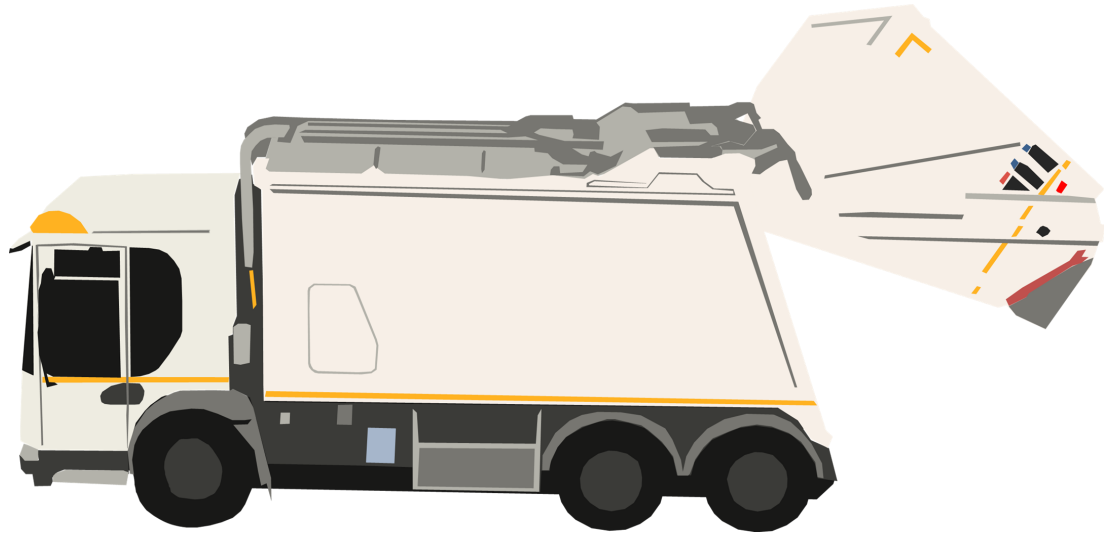


and Plastic



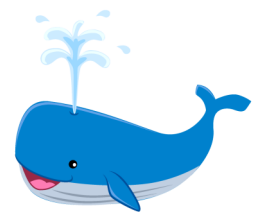
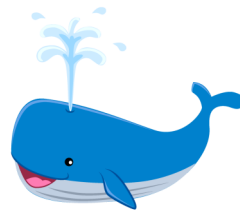
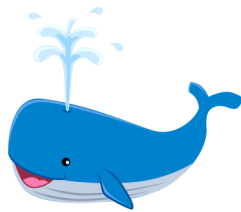
Reduce, reuse, recycle

Lorries drive around London, often very early in the morning, picking up all the rubbish and the Recycling from outside your homes, and then they bring it to us.



Across our 4 boroughs we receive Recycling from just over a million people. We get around 350 tonnes of Recycling every day, which weighs more than **3**

Blue Whales!



So, what happens next?

First, the Recycling needs to be sorted by it's material type. Do you remember what the 5 main materials that go in the Recycling are?

(back on page 1)



These materials go through our MRF, which stands for: Materials Recycling Facility (pictured to the left)

There are lots of machines that sort the Recycling by it's material type. For example there are magnets to take out the steel cans, etc.

(More details on Page 6)

Reduce, reuse, recycle

Sometimes people put the wrong thing in the Recycling, but there are lots of workers who's job is to spot these things, and take them out by hand.



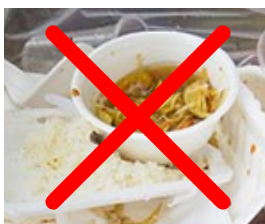
This is called 'Quality Control', and we can help by Recycling correctly. Here are some examples of things we DON'T want in the Recycling:



Scrunchy Plastic: like crisp packets, sweet wrappers, or cling film. Even though they are plastic, they can't be Recycled. We only want Plastic trays, pots, tubs and bottles.



Tissues: Even though they are paper, tissues, napkins, and kitchen roll are too thin to be Recycled, and it's often contaminated anyway.



Food: We don't want any food as it can spoil the paper, so we must not put any leftovers in the Recycling, and we also need to make sure we always rinse out our empty tins and jars.

(For a full list of Recycling Do's and Don'ts, see page 5)

So, let's see what happens once the Recycling has been sorted...

Reduce, reuse, recycle

The sorted Recycling is squashed into a cube, and tied together. This is called a “bale”, like a bale of hay. Can you see them in the picture below?



The Recycling then gets sent to factories, and turned into something new. Maybe it will be made into the same type of thing (your old newspaper turned into another newspaper)



Or maybe it will be turned into something completely different. Like the England football kit, which is made out of recycled plastic bottles



Or maybe your metal tins and glass jars could become a big, tall skyscraper, like The Shard.



Did you know: 95% of the construction materials for The Shard were Recycled

Reduce, reuse, recycle

Activity:



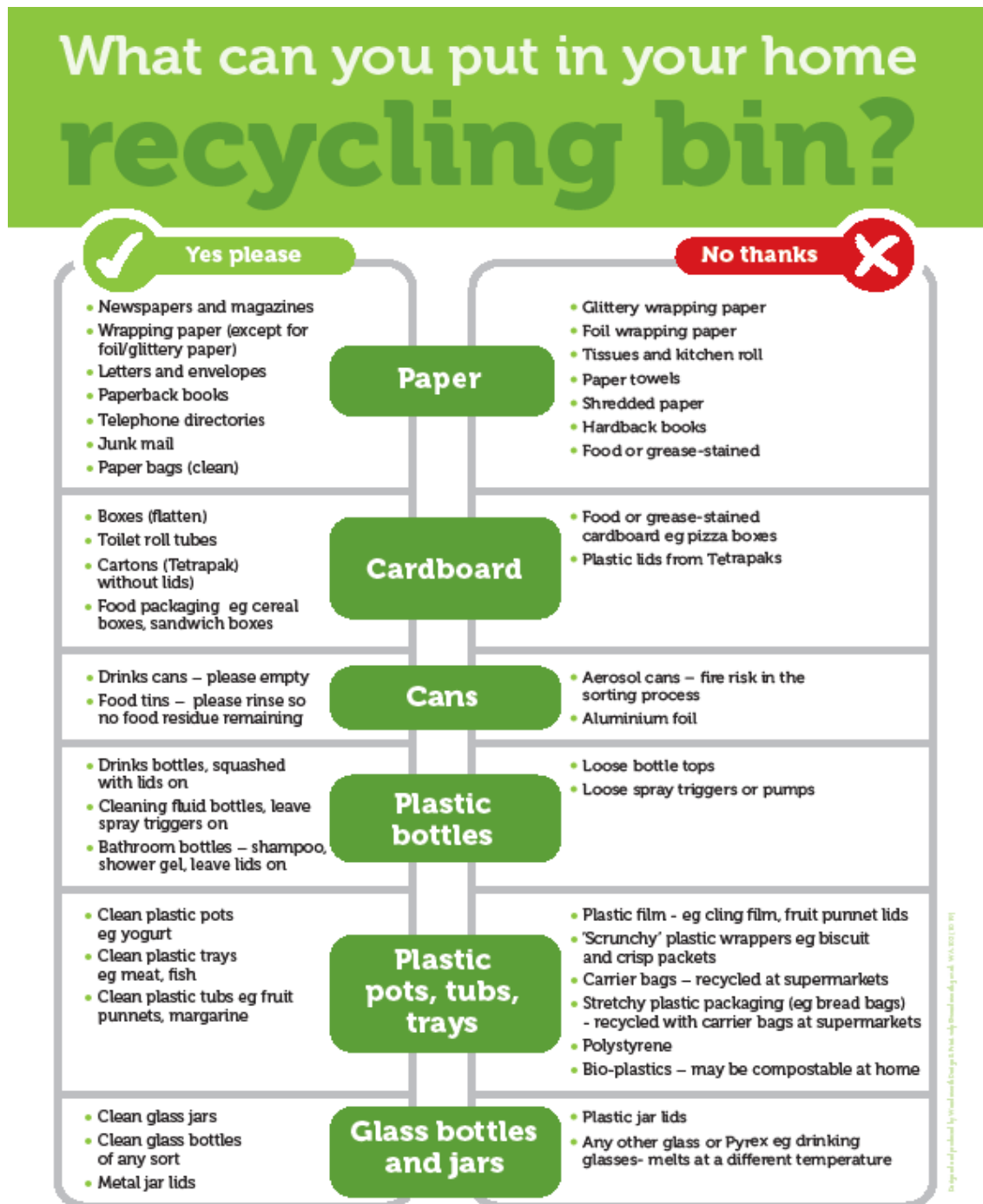
1. Do you have a Recycling bin at home or at school? You may have to ask your Parent, Carer, or Teacher where it is. What is in the Recycling bin, and can you see anything that shouldn't be in there?
2. Can you make a sign or a poster to go near the Recycling bin, making it clear what does and doesn't go in there? You could decorate it with crayons, pencils, paint, or collage, and make it bright and colourful so it stands out

3. List the 5 main materials:

Paper,
Cardboard,
Metal Cans,
Plastic &
Glass
and maybe,
also the things
we DON'T
want:
Schrunchy
plastic, Tissues,
& Food

Extra: At home,
you could also try
and find out which
day of the week
the Recycling gets
collected from

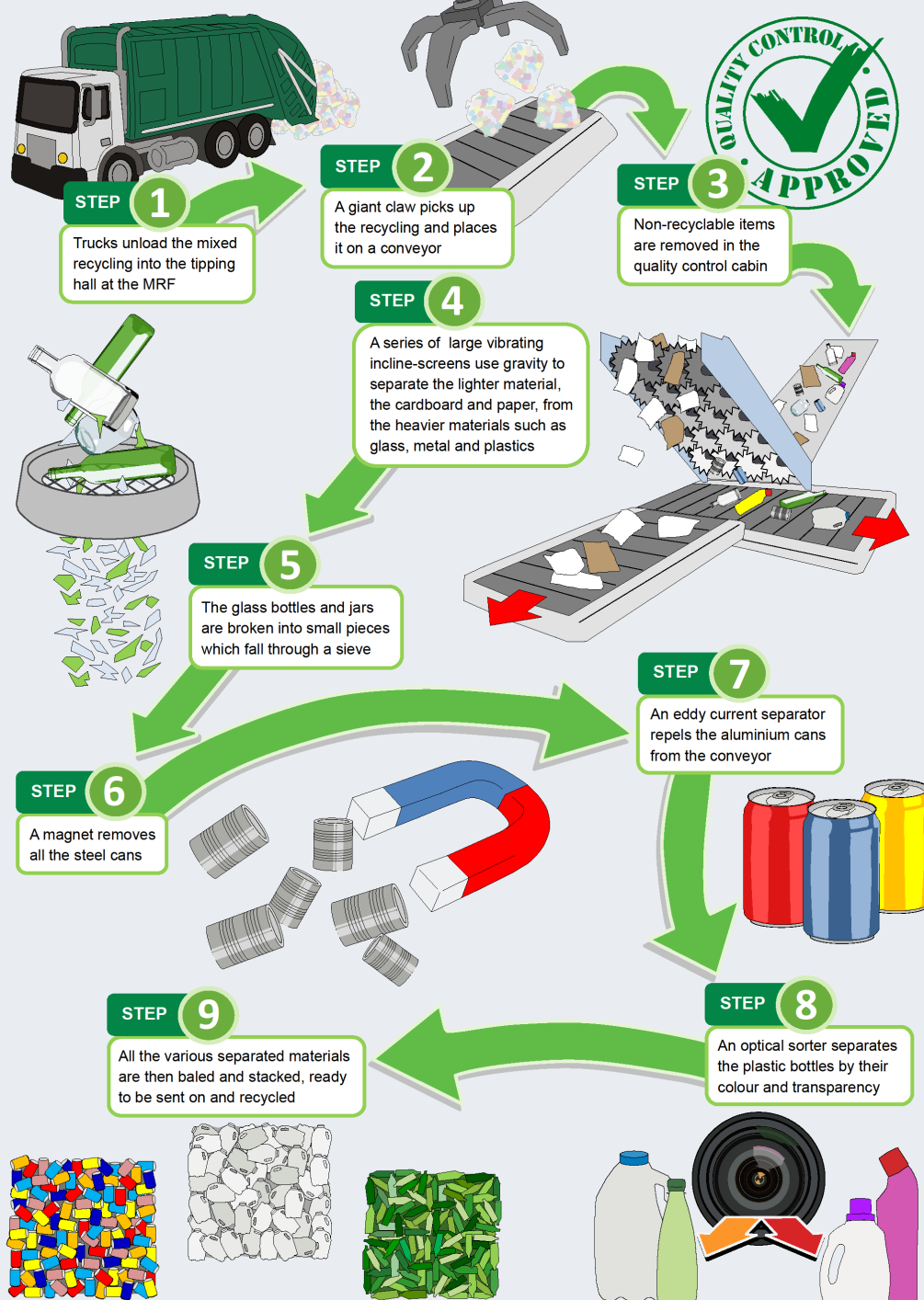
your home, or if you have a communal Recycling bin, find out where it is.



Email: info@wrra.gov.uk or call: 020 8871 2788
www.wrra.gov.uk



Materials Recycling Facility (MRF) - How our machines work -



Other useful links:

This goes to a map on our website which shows where each material gets sent to next:

<https://wrra.gov.uk/news/where-does-my-recycling-go/>

A link to a video about WRRWA: <https://wrra.gov.uk/schools-adult-groups/what-happens-to-your-rubbish-and-recycling/>